



**AIR
TECHNOLOGY**
CORPORATION, S.A. DE C.V.

SI
DI
DIT

Simple aspiración
Single inlet

Doble aspiración
Double inlet

Doble aspiración tipo Twin
Twin Double inlet



Aero ventiladores centrífugos ATC
Turbinas con álabes curvos adelantados
ATC centrifugal forward curved fans



The Right Choice

SI/DI/DIT

Indice

| | |
|-----------------------------------|----|
| Características principales | 1 |
| Modelos y Diseños de construcción | 3 |
| Especificaciones técnicas | 4 |
| Curvas de operación | 7 |
| Dimensiones generales | 13 |

Table of Contents

| | |
|--------------------------------------|----|
| Construction features | 2 |
| Models and construction arrangements | 3 |
| Performance data | 4 |
| Operation curves | 7 |
| Dimensions | 13 |



SI/DI/DIT

Aeroventiladores centrífugos ATC
Turbinas con álabes curvos adelantados

SI Simple Aspiración
DI Doble Aspiración
DIT Doble Aspiración Tipo Twin

La gama SI/DI/DIT de los ventiladores centrífugos de Simple / Doble oído de aspiración ATC ha sido específicamente diseñada para aplicaciones de suministro, extracción y retorno de aire limpio por conductos. Se compone de 7 módulos en Simple Aspiración (SI), 11 módulos en Doble Aspiración (DI) y 3 módulos en Doble Aspiración Tipo Twin (DIT) con un rango de diámetro de turbinas desde 9" hasta 36". La serie SI/DI/DIT está desarrollada con turbinas con álabes curvos adelantados y transmisión por poleas y bandas ofreciendo la línea de ventiladores más versátil, eficiente y silenciosa para manejar un rango amplio de caudal de aire a medianas presiones estáticas en el mercado.

Aplicaciones

Unidades manejadores de aire acondicionado, calefacción, enfriadores evaporativos, cortinas de aire, cajas de ventilación con filtros, etc.

Características principales

- Conjunto envolvente o carcasa, cono-aro de succión, deflector de aire en descarga, soporte del motor y bastidor común con perfiles estructurales fabricado en lamina galvanizada ó acero al carbón de diferentes calibres según tamaño y modelo del ventilador.
- Turbina centrífuga de alta eficiencia y operación silenciosa con alabes curvos adelantados estática y dinámicamente balanceada, fabricada en lamina galvanizada resistente a la corrosión.
- El proceso de prepintado con tratamientos químicos y posteriormente la aplicación electrostática de pintura poliéster en polvo horneada altamente resistente a la corrosión e intemperie en todos los componentes de los ventiladores centrífugos es estándar.
- Disponible en 3 distintos diseños de construcción: SI (Simple aspiración), DI (Doble aspiración), DIT (Doble aspiración tipo twin); 4 posiciones de descarga a cada 90° (TH, DB, BH, UB); 2 diferentes rotaciones de la turbina (CW- CCW); 3 posiciones de montaje de motor: sobre una base con rieles en piso, Sobre un bastidor común con perfiles estructurales y Sobre envolvente del ventilador.
- Chumaceras o Rodamientos de alta eficiencia y mínimo mantenimiento, diseñados para aplicaciones industriales adquiridos de los fabricantes mundialmente reconocidos.
- Flechas o ejes impulsores seleccionados en diferentes diámetros y longitudes según tamaño del ventilador, fabricados en acero AISI C-1045, perfectamente pulidos y rectificados en toda su longitud y protegidos con un recubrimiento anticorrosivo.
- Base ajustable de motor fabricada en acero al carbón y diseñada para ajuste, alineación y tensión de las bandas con una precisión y rapidez.
- Accionado por transmisión de poleas y bandas a los motores eléctricos de alta eficiencia diseñados bajo especificaciones NEMA, permitiendo lograr las distintas relaciones de caudal y presión.

Nomenclatura:

DI - 15 / 15 - CW

1 2 3 4

1. Modelo del Ventilador
SI - Simple aspiración
DI - Doble aspiración
DIT - Doble aspiración tipo twin
2. Diámetro aproximado de la turbina en pulgadas
3. Ancho aproximado de la turbina en pulgadas
4. Rotación de la turbina
CW - Sentido reloj
CCW - Sentido contra reloj



SI/DI/DIT

ATC Centrifugal forward curved fans

SI Single Inlet
DI Double Inlet
DIT Twin Double Inlet

The SI/DI/DIT series are belt driven single inlet, double inlet centrifugal forward curved fans, specially designed for handling relatively clean air in supply, exhaust and ducted return air applications. These line of ATC blowers are available in 7 sizes in single inlet (SI), 11 sizes in double inlet (DI) and 3 sizes in twin double inlet (DIT), ranging from 9" through 36" wheel diameters. These fans are manufactured under strict quality assurance standards to ensure high efficiency and quiet operation in a compact design which produce high air volumes at low speeds.

Applications

Heating, Ventilation and Air Conditioning Units, Evaporative Coolers, Air Curtains, Filtered Cabinet Fans, etc.

Construction features

- Housings, scrolls, inlet cones, rings, drive stands, and all structural supports are made of heavy gauge all welded steel construction.




- Forward curved galvanized steel wheels are statically and dynamically balanced at the factory and designed for optimum performance, long life and quiet operation.
- Electrostatically applied powder coating is standard on all ATC fans. For special requirements, please contact the factory.
- The fans are available in 3 different construction arrangements: SI (Single inlet), DI (Double inlet), DIT (Twin double inlet) ; field rotatable to four 90° standard discharges (TH, DB, BH, UB); 3 distinct type of motor mounting positions: floor base mounted, structural base mounted, scroll mounted; clockwise (CW) or counter clockwise wheel rotation.
- Self-aligning heavy duty, pillow blocks ball bearings are designed to operate under the most severe atmospheric conditions and are supplied by the most prestigious world wide manufacturers.
- Shafts are designed for long life in different diameters and lengths, turned, ground and polished of solid SAE 1045 steel for smooth operation, key-wayed and protected with a corrosion resistant coating.
- Adjustable steel motor plate pivoted at one end for ease of belt tensioning.
- The SI/DI/DIT series are the ideal for the general belt drive ventilation applications, using the combination of high quality sheaves, v belts, high efficiency motors in order to handle a wide range of air volumes and pressures.

Nomenclature:

DI - 15 / 15 - CW

1 2 3 4

- Fan Model
SI - Single inlet
DI - Double inlet
DIT - Twin double inlet
- Wheel diameter in inches
- Wheel width in inches
- Impeller Rotation
CW - Clockwise
CCW - Counter Clockwise

| | Modelo | Diámetro de la turbina (pulgadas) | Ancho de la turbina (pulgadas) | Diámetro del buje (pulgadas) | |
|--|-----------|-----------------------------------|--------------------------------|------------------------------|---|
| | Model | Wheel diameter (inches) | Wheel width (inches) | Bore Diameter (inches) | |
| <p>SI</p> <p>Aero ventiladores centrífugos ATC Turbinas de álabes curvos adelantados Simple aspiración</p> <p>ATC single inlet centrifugal forward curved fans</p> | SI-10/6 | 11 1/8 | 6 | 3/4 |  |
| | SI-12/6 | 13 3/16 | 6 | 3/4 | |
| | SI-15/9 | 15 1/2 | 9 1/2 | 1 | |
| | SI-18/9 | 18 9/16 | 9 | 1 | |
| | SI-22/11 | 23 1/4 | 11 1/4 | 1 1/8 | |
| | SI-25/12 | 26 1/4 | 12 3/4 | 1 1/8 | |
| | SI-30/15 | 31 1/4 | 15 3/16 | 1 3/8 | |
| <p>DI</p> <p>Aero ventiladores centrífugos ATC Turbinas de álabes curvos adelantados Doble aspiración</p> <p>ATC double inlet centrifugal forward curved fans</p> | DI-9/6 | 9 1/2 | 6 | 3/4 |  |
| | DI-9/9 | 9 1/2 | 9 1/2 | 3/4 | |
| | DI-10/10 | 10 5/8 | 10 5/8 | 3/4 | |
| | DI-12/12 | 12 23/32 | 12 5/8 | 1 | |
| | DI-15/15 | 15 | 15 | 1 | |
| | DI-18/18 | 18 9/16 | 18 | 1 1/8 | |
| | DI-20/20 | 20 1/2 | 20 | 1 1/8 | |
| | DI-22/22 | 22 7/8 | 22 | 1 3/8 | |
| | DI-25/25 | 25 1/2 | 25 | 1 3/8 | |
| | DI-30/30 | 30 3/4 | 30 | 1 5/8 | |
| DI-36/36 | 36 1/2 | 36 | 1 7/8 | | |
| <p>DIT</p> <p>Aero ventiladores centrífugos ATC turbinas de álabes curvos adelantados Doble aspiración tipo twin</p> <p>ATC twin double inlet centrifugal forward curved fans</p> | DIT-10/10 | 10 5/8 | 10 5/8 | 3/4 |  |
| | DIT-12/12 | 12 23/32 | 12 5/8 | 1 | |
| | DIT-15/15 | 15 | 15 | 1 | |



| Modelo Model | Velocidad Descarga Outlet Vel | Caudal Air Flow | 0.125" | | 0.25" | | 0.375" | | 0.50" | | 0.625" | | 0.75" | | 0.875" | | 1.00" | | 1.25" | | 1.50" | | 1.75" | | 2.00" | | |
|-----------------|-------------------------------------|--------------------|--------|------|-------|------|--------|------|-------|------|--------|------|-------|------|--------|------|-------|-------|-------|-------|-------|-------|-------|-------|-------|-------|------|
| | FPM | CFM | RPM | BHP | RPM | BHP | RPM | BHP | RPM | BHP | RPM | BHP | RPM | BHP | RPM | BHP | RPM | BHP | RPM | BHP | RPM | BHP | RPM | BHP | RPM | BHP | |
| SI 22/11 | 926 | 3000 | | | | | | | 338 | 0.40 | 417 | 0.60 | 487 | 0.81 | 550 | 1.04 | 607 | 1.29 | 659 | 1.55 | 708 | 1.82 | 797 | 2.40 | 871 | 2.92 | |
| | 1111 | 3600 | | | | | | 309 | 0.45 | 347 | 0.55 | 413 | 0.72 | 480 | 0.95 | 541 | 1.20 | 598 | 1.46 | 650 | 1.74 | 699 | 2.03 | 788 | 2.65 | 868 | 3.32 |
| | 1296 | 4200 | 246 | 0.40 | 286 | 0.50 | 324 | 0.60 | 358 | 0.70 | 422 | 0.93 | 478 | 1.12 | 535 | 1.38 | 589 | 1.67 | 641 | 1.96 | 689 | 2.26 | 779 | 2.92 | 859 | 3.62 | |
| | 1481 | 4800 | 271 | 0.56 | 306 | 0.67 | 340 | 0.78 | 373 | 0.90 | 432 | 1.16 | 487 | 1.41 | 536 | 1.63 | 585 | 1.89 | 635 | 2.21 | 681 | 2.54 | 769 | 3.22 | 850 | 3.96 | |
| | 1667 | 5400 | 296 | 0.77 | 327 | 0.90 | 358 | 1.01 | 389 | 1.14 | 444 | 1.41 | 496 | 1.71 | 545 | 1.99 | 589 | 2.24 | 630 | 2.48 | 676 | 2.84 | 761 | 3.58 | 841 | 4.34 | |
| | 1852 | 6000 | 326 | 1.02 | 350 | 1.16 | 379 | 1.30 | 407 | 1.43 | 460 | 1.72 | 507 | 2.03 | 554 | 2.36 | 598 | 2.68 | 638 | 2.96 | 676 | 3.23 | 757 | 3.94 | 833 | 4.76 | |
| | 2037 | 6600 | 349 | 1.34 | 375 | 1.49 | 400 | 1.64 | 426 | 1.78 | 476 | 2.09 | 522 | 2.42 | 565 | 2.76 | 607 | 3.12 | 647 | 3.47 | 685 | 3.80 | 755 | 4.40 | 828 | 5.20 | |
| | 2222 | 7200 | 376 | 1.71 | 400 | 1.86 | 422 | 2.03 | 447 | 2.19 | 494 | 2.52 | 538 | 2.85 | 575 | 3.22 | 619 | 3.60 | 657 | 4.00 | 694 | 4.38 | 764 | 5.10 | 826 | 5.74 | |
| | 2407 | 7800 | 404 | 2.15 | 422 | 2.30 | 447 | 2.49 | 469 | 2.67 | 512 | 3.00 | 555 | 3.38 | 595 | 3.75 | 632 | 4.15 | 669 | 4.56 | 704 | 4.99 | 772 | 5.82 | 835 | 6.57 | |
| | 2593 | 8400 | 432 | 2.66 | 451 | 2.82 | 472 | 3.02 | 492 | 3.21 | 533 | 3.58 | 573 | 3.96 | 611 | 4.36 | 648 | 4.78 | 682 | 5.20 | 716 | 5.64 | 782 | 6.57 | 844 | 7.45 | |
| | 2778 | 9000 | 460 | 3.25 | 478 | 3.42 | 497 | 3.62 | 516 | 3.82 | 554 | 4.24 | 591 | 4.62 | 629 | 5.05 | 663 | 5.46 | 698 | 5.92 | 730 | 6.38 | 793 | 7.35 | | | |
| | 2963 | 9600 | 488 | 3.92 | 505 | 4.10 | 522 | 4.29 | 541 | 4.52 | 576 | 4.97 | 612 | 5.38 | 647 | 5.82 | 681 | 6.27 | 713 | 6.71 | 745 | 7.21 | | | | | |
| | 3148 | 10200 | 516 | 4.67 | 533 | 4.87 | 548 | 5.05 | 566 | 5.30 | 599 | 5.78 | 633 | 6.23 | 665 | 6.66 | 699 | 7.15 | 730 | 7.63 | | | | | | | |
| | 3333 | 10800 | 544 | 5.51 | 560 | 5.73 | 575 | 5.93 | 591 | 6.16 | 623 | 6.67 | 655 | 7.18 | 686 | 7.63 | | | | | | | | | | | |
| SI 25/12 | 828 | 3600 | | | | | 256 | 0.36 | 295 | 0.48 | 367 | 0.71 | 430 | 1.01 | 487 | 1.34 | 537 | 1.67 | 581 | 2.00 | 622 | 2.34 | 690 | 3.03 | 752 | 3.76 | |
| | 1011 | 4400 | | | | | 262 | 0.48 | 297 | 0.60 | 361 | 0.87 | 422 | 1.16 | 476 | 1.47 | 527 | 1.86 | 574 | 2.26 | 618 | 2.66 | 695 | 3.46 | 761 | 4.28 | |
| | 1195 | 5200 | | | 240 | 0.54 | 272 | 0.64 | 304 | 0.77 | 363 | 1.06 | 417 | 1.38 | 469 | 1.70 | 518 | 2.06 | 563 | 2.44 | 607 | 2.89 | 687 | 3.83 | 759 | 4.79 | |
| | 1379 | 6000 | 227 | 0.62 | 262 | 0.77 | 285 | 0.85 | 314 | 0.99 | 368 | 1.29 | 419 | 1.62 | 466 | 1.99 | 511 | 2.37 | 556 | 2.75 | 598 | 3.17 | 676 | 4.10 | 749 | 5.17 | |
| | 1563 | 6800 | 248 | 0.86 | 281 | 1.03 | 306 | 1.16 | 325 | 1.25 | 377 | 1.58 | 424 | 1.93 | 468 | 2.31 | 514 | 2.71 | 551 | 3.15 | 591 | 3.57 | 668 | 4.48 | 737 | 5.47 | |
| | 1747 | 7600 | 272 | 1.15 | 300 | 1.34 | 328 | 1.53 | 346 | 1.64 | 388 | 1.94 | 432 | 2.30 | 474 | 2.69 | 511 | 3.11 | 552 | 3.56 | 590 | 4.04 | 661 | 4.98 | 730 | 6.00 | |
| | 1931 | 8400 | 291 | 1.51 | 319 | 1.70 | 346 | 1.92 | 369 | 2.11 | 400 | 2.35 | 442 | 2.75 | 482 | 3.15 | 520 | 3.58 | 556 | 4.05 | 592 | 4.53 | 659 | 5.57 | 724 | 6.62 | |
| | 2115 | 9200 | 314 | 1.94 | 340 | 2.16 | 364 | 2.39 | 388 | 2.62 | 421 | 2.94 | 454 | 3.26 | 492 | 3.70 | 528 | 4.14 | 563 | 4.61 | 597 | 5.12 | 661 | 6.17 | 722 | 7.32 | |
| | 2299 | 10000 | 337 | 2.46 | 361 | 2.69 | 383 | 2.91 | 406 | 3.19 | 443 | 3.61 | 470 | 3.90 | 503 | 4.32 | 538 | 4.80 | 571 | 5.28 | 604 | 5.78 | 665 | 6.87 | | | |
| | 2483 | 10800 | 361 | 3.06 | 383 | 3.30 | 404 | 3.55 | 425 | 3.83 | 464 | 4.36 | 491 | 4.71 | 516 | 5.00 | 549 | 5.53 | 581 | 6.04 | 611 | 6.55 | 671 | 7.67 | | | |
| | 2667 | 11600 | 385 | 3.76 | 405 | 4.00 | 425 | 4.28 | 444 | 4.53 | 482 | 5.14 | 513 | 5.62 | 536 | 5.96 | 561 | 6.31 | 592 | 6.90 | | | | | | | |
| 2851 | 12400 | 408 | 4.56 | 427 | 4.80 | 446 | 5.10 | 464 | 5.38 | | | | | | | | | | | | | | | | | | |
| SI 30/15 | 1058 | 5800 | | | | | | 247 | 0.80 | 298 | 1.12 | 345 | 1.46 | 388 | 1.83 | 429 | 2.25 | 467 | 2.66 | 503 | 3.14 | 571 | 4.13 | 629 | 5.18 | | |
| | 1277 | 7000 | | | | | | 254 | 1.08 | 302 | 1.44 | 345 | 1.83 | 385 | 2.22 | 423 | 2.64 | 459 | 3.09 | 493 | 3.56 | 569 | 4.24 | 628 | 5.26 | | |
| | 1496 | 8200 | | | | | 240 | 1.24 | 264 | 1.44 | 309 | 1.85 | 349 | 2.27 | 387 | 2.70 | 422 | 3.17 | 456 | 3.63 | 488 | 4.12 | 556 | 4.69 | 615 | 5.79 | |
| | 1715 | 9400 | | | | | 253 | 1.65 | 276 | 1.88 | 318 | 2.35 | 356 | 2.82 | 391 | 3.28 | 424 | 3.75 | 457 | 4.37 | 487 | 4.83 | 545 | 5.91 | 600 | 7.12 | |
| | 1934 | 10600 | | | | | 269 | 2.16 | 290 | 2.41 | 329 | 2.94 | 365 | 3.47 | 398 | 3.99 | 430 | 4.51 | 460 | 5.06 | 490 | 5.60 | 545 | 6.83 | 597 | 8.02 | |
| | 2153 | 11800 | 246 | 2.24 | 248 | 1.91 | 286 | 2.78 | 305 | 3.05 | 341 | 3.64 | 375 | 4.21 | 407 | 4.81 | 438 | 5.39 | 466 | 5.97 | 494 | 6.57 | 547 | 7.79 | 597 | 9.16 | |
| | 2372 | 13000 | 267 | 2.92 | 267 | 2.50 | 304 | 3.52 | 321 | 3.83 | 355 | 4.45 | 387 | 5.10 | 418 | 5.72 | 447 | 6.39 | 474 | 7.00 | 501 | 7.69 | 552 | 9.00 | 600 | 10.31 | |
| | 2591 | 14200 | 289 | 3.74 | 286 | 3.22 | 323 | 4.40 | 339 | 4.72 | 370 | 5.38 | 400 | 6.10 | 429 | 6.80 | 457 | 7.47 | 484 | 8.22 | 509 | 8.89 | 560 | 10.94 | 607 | 12.37 | |
| | 2810 | 15400 | 310 | 4.71 | 306 | 4.08 | 342 | 5.42 | 357 | 5.79 | 386 | 6.49 | 414 | 7.22 | 442 | 8.01 | 469 | 8.76 | 494 | 9.49 | 519 | 10.30 | 566 | 11.79 | 610 | 13.33 | |
| | 3029 | 16600 | 332 | 5.84 | 326 | 5.08 | 362 | 6.62 | 376 | 6.98 | 403 | 7.76 | 430 | 8.52 | 456 | 9.35 | 481 | 10.18 | 506 | 11.00 | 530 | 11.78 | 575 | 13.47 | 618 | 15.11 | |
| | 3248 | 17800 | 354 | 7.14 | 347 | 6.23 | 382 | 7.98 | 395 | 8.37 | 422 | 9.17 | | | | | | | | | | | | | | | |
| 3467 | 19000 | 376 | 8.61 | 368 | 7.56 | | | | | | | | | | | | | | | | | | | | | | |

SI/DI/DIT



Especificaciones técnicas / Performance data

| Modelo Model | CFM | 0.25" SP | | 0.5" SP | | 0.75" SP | | 1.00" SP | |
|-----------------|------|----------|------|---------|------|----------|------|----------|------|
| | | RPM | BHP | RPM | BHP | RPM | BHP | RPM | BHP |
| DI-9/6 | 400 | 556 | 0.07 | 783 | 0.11 | 992 | 0.15 | 1156 | 0.19 |
| | 600 | 575 | 0.09 | 769 | 0.13 | 950 | 0.17 | 1102 | 0.21 |
| | 800 | 630 | 0.12 | 794 | 0.16 | 958 | 0.21 | 1092 | 0.25 |
| | 1000 | 700 | 0.18 | 845 | 0.22 | 986 | 0.27 | 1100 | 0.37 |
| DI-9/9 | 600 | 566 | 0.10 | 788 | 0.14 | 998 | 0.20 | 1148 | 0.25 |
| | 800 | 589 | 0.12 | 787 | 0.16 | 972 | 0.23 | 1127 | 0.29 |
| | 1000 | 623 | 0.15 | 803 | 0.20 | 964 | 0.27 | 1109 | 0.33 |
| | 1200 | 663 | 0.19 | 828 | 0.25 | 980 | 0.33 | 1111 | 0.39 |
| | 1400 | 710 | 0.25 | 863 | 0.32 | 1005 | 0.40 | 1123 | 0.47 |
| DI-10/10 | 800 | 490 | 0.13 | 700 | 0.20 | 859 | 0.28 | 1002 | 0.37 |
| | 1000 | 507 | 0.16 | 693 | 0.21 | 843 | 0.30 | 977 | 0.38 |
| | 1200 | 529 | 0.18 | 705 | 0.26 | 841 | 0.33 | 967 | 0.42 |
| | 1400 | 558 | 0.22 | 718 | 0.29 | 847 | 0.38 | 968 | 0.46 |
| | 1600 | 591 | 0.25 | 739 | 0.34 | 863 | 0.43 | 987 | 0.53 |
| | 1800 | 635 | 0.32 | 763 | 0.40 | 883 | 0.50 | 991 | 0.60 |

| Modelo Model | CFM | 0.25" | | 0.5" | | 0.75" | | 1.00" | | 1.25" | | 1.5" | | 1.75" | | 2.00" | | 2.25" | | 2.50" | | |
|-----------------|----------|-------|------|------|------|-------|------|-------|------|-------|------|------|------|-------|------|-------|------|-------|------|-------|------|---|
| | | RPM | BHP | RPM | BHP | RPM | BHP | RPM | BHP | RPM | BHP | RPM | BHP | RPM | BHP | RPM | BHP | RPM | BHP | RPM | BHP | |
| DI-12/12 | 1400 | 409 | 0.11 | 571 | 0.17 | 706 | 0.27 | 823 | 0.37 | * | * | * | * | * | * | * | * | * | * | * | * | |
| | 1600 | 416 | 0.13 | 571 | 0.22 | 701 | 0.32 | 815 | 0.42 | 919 | 0.53 | * | * | * | * | * | * | * | * | * | * | |
| | 1800 | 425 | 0.16 | 574 | 0.26 | 699 | 0.36 | 810 | 0.47 | 911 | 0.59 | * | * | * | * | * | * | * | * | * | * | |
| | 2000 | 439 | 0.20 | 579 | 0.31 | 700 | 0.42 | 808 | 0.53 | 906 | 0.66 | 997 | 0.78 | * | * | * | * | * | * | * | * | |
| | 2200 | 457 | 0.25 | 585 | 0.36 | 703 | 0.48 | 808 | 0.60 | 903 | 0.73 | 992 | 0.86 | * | * | * | * | * | * | * | * | |
| | 2400 | 480 | 0.31 | 594 | 0.42 | 708 | 0.55 | 810 | 0.68 | 903 | 0.81 | 989 | 0.96 | 1071 | 1.01 | 1149 | 1.25 | * | * | * | * | |
| | 2600 | 505 | 0.38 | 604 | 0.48 | 714 | 0.62 | 813 | 0.76 | 904 | 0.91 | 989 | 1.06 | 1069 | 1.21 | 1145 | 1.37 | 1217 | 1.53 | 1287 | 1.70 | |
| | 2800 | 533 | 0.46 | 618 | 0.56 | 721 | 0.70 | 818 | 0.85 | 907 | 1.01 | 990 | 1.16 | 1068 | 1.32 | 1142 | 1.49 | 1213 | 1.66 | 1282 | 1.83 | |
| | 3000 | 561 | 0.56 | 635 | 0.65 | 730 | 0.79 | 824 | 0.85 | 911 | 1.12 | 993 | 1.28 | 1069 | 1.45 | 1142 | 1.62 | 1211 | 1.80 | 1278 | 1.98 | |
| | 3200 | X | X | 656 | 0.76 | 741 | 0.90 | 831 | 1.06 | 917 | 1.24 | 996 | 1.41 | 1071 | 1.59 | 1143 | 1.77 | 1211 | 1.95 | 1277 | 2.14 | |
| | 3400 | X | X | 679 | 0.88 | 755 | 1.01 | 840 | 1.18 | 923 | 1.36 | 1001 | 1.55 | 1075 | 1.74 | 1145 | 1.92 | 1212 | 2.11 | 1277 | 2.31 | |
| | 3600 | X | X | 704 | 1.02 | 771 | 1.15 | 850 | 1.31 | 930 | 1.50 | 1007 | 1.70 | 1080 | 1.89 | 1149 | 2.09 | 1214 | 2.29 | 1278 | 2.49 | |
| | 3800 | X | X | 731 | 1.17 | 791 | 1.30 | 862 | 1.46 | 939 | 1.65 | 1014 | 1.85 | 1085 | 2.06 | 1153 | 2.27 | 1218 | 2.48 | 1280 | 2.69 | |
| | 4000 | X | X | X | X | 812 | 1.46 | 877 | 1.62 | 949 | 1.82 | 1021 | 2.02 | 1091 | 2.24 | 1158 | 2.46 | 1222 | 2.67 | 1284 | 2.89 | |
| | DI-15/15 | 2000 | 341 | 0.14 | 474 | 0.26 | 587 | 0.39 | 686 | 0.53 | * | * | * | * | * | * | * | * | * | * | * | * |
| | | 2500 | 355 | 0.21 | 476 | 0.34 | 581 | 0.48 | 675 | 0.64 | 760 | 0.81 | 839 | 0.99 | 911 | 1.17 | * | * | * | * | * | * |
| 3000 | | 376 | 0.31 | 486 | 0.45 | 583 | 0.61 | 670 | 0.78 | 752 | 0.96 | 827 | 1.16 | 899 | 1.36 | 965 | 1.57 | 1029 | 1.78 | 1089 | 2.00 | |
| 3500 | | 406 | 0.45 | 501 | 0.59 | 591 | 0.76 | 673 | 0.95 | 750 | 1.14 | 822 | 1.35 | 890 | 1.57 | 955 | 1.80 | 1017 | 2.03 | 1076 | 2.27 | |
| 4000 | | 441 | 0.63 | 521 | 0.78 | 604 | 0.96 | 681 | 1.16 | 754 | 1.36 | 822 | 1.59 | 887 | 1.82 | 949 | 2.06 | 1009 | 2.31 | 1066 | 2.56 | |
| 4500 | | x | x | 546 | 1.01 | 621 | 1.20 | 694 | 1.41 | 762 | 1.63 | 827 | 1.86 | 889 | 2.11 | 948 | 2.36 | 1006 | 2.62 | 1061 | 2.90 | |
| 5000 | | x | x | 577 | 1.30 | 642 | 1.49 | 710 | 1.71 | 775 | 1.95 | 837 | 2.19 | 896 | 2.45 | 953 | 2.72 | 1007 | 2.99 | * | * | |
| 5500 | x | x | 612 | 1.65 | 668 | 1.85 | 729 | 2.08 | 790 | 2.30 | 849 | 2.58 | 906 | 2.85 | 961 | 3.13 | * | * | * | * | | |
| DI-18/18 | 3000 | 299 | 0.25 | 411 | 0.45 | 506 | 0.69 | 588 | 0.93 | 660 | 1.19 | * | * | * | * | * | * | * | * | * | * | |
| | 3500 | 310 | 0.32 | 414 | 0.54 | 504 | 0.79 | 584 | 1.06 | 656 | 1.35 | 724 | 1.47 | 785 | 1.74 | * | * | * | * | * | * | |
| | 4000 | 322 | 0.42 | 419 | 0.65 | 505 | 0.91 | 582 | 1.21 | 652 | 1.52 | 719 | 1.66 | 780 | 1.95 | 836 | 2.25 | 889 | 2.55 | * | * | |
| | 4500 | 337 | 0.53 | 428 | 0.78 | 509 | 1.06 | 582 | 1.37 | 650 | 1.70 | 714 | 1.86 | 775 | 2.17 | 831 | 2.49 | 884 | 2.82 | 935 | 3.16 | |
| | 5000 | 353 | 0.67 | 439 | 0.93 | 515 | 1.23 | 585 | 1.55 | 651 | 1.89 | 712 | 2.09 | 771 | 2.41 | 826 | 2.75 | 879 | 3.10 | 929 | 3.46 | |
| | 5500 | 369 | 0.84 | 452 | 1.12 | 524 | 1.43 | 591 | 1.76 | 654 | 2.12 | 712 | 2.35 | 769 | 2.69 | 823 | 3.04 | 875 | 3.41 | 925 | 3.78 | |
| | 6000 | 387 | 1.03 | 466 | 1.33 | 535 | 1.65 | 599 | 2.00 | 659 | 2.38 | 715 | 2.64 | 769 | 2.99 | 822 | 3.36 | 872 | 3.75 | 921 | 4.14 | |
| | 6500 | X | X | 480 | 1.58 | 547 | 1.92 | 608 | 2.28 | 666 | 2.67 | 719 | 2.97 | 772 | 3.34 | 823 | 3.72 | 872 | 4.12 | 919 | 4.53 | |
| | 7000 | X | X | 496 | 1.86 | 560 | 2.22 | 619 | 2.59 | 675 | 3.02 | 726 | 3.33 | 777 | 3.72 | 826 | 4.12 | 873 | 4.53 | 919 | 4.96 | |
| | 7500 | X | X | 513 | 2.17 | 575 | 2.55 | 631 | 2.95 | 685 | 3.36 | 735 | 3.74 | 783 | 4.15 | 831 | 4.56 | 879 | 4.99 | 921 | 5.43 | |
| | 8000 | X | X | X | X | 590 | 2.93 | 645 | 3.34 | 696 | 3.77 | 745 | 4.19 | 792 | 4.62 | 837 | 5.05 | 881 | 5.49 | 925 | 5.95 | |
| | 8500 | X | X | X | X | 605 | 3.35 | 659 | 3.78 | 709 | 4.23 | 756 | 4.69 | 801 | 5.13 | 845 | 5.58 | 888 | 6.04 | 930 | 6.51 | |
| | 9000 | X | X | X | X | 622 | 3.81 | 674 | 4.26 | 722 | 4.73 | 768 | 5.23 | 812 | 5.69 | 855 | 6.16 | 896 | 6.64 | 937 | 7.13 | |
| | 9500 | X | X | X | X | X | X | 689 | 4.79 | 736 | 5.28 | 781 | 5.81 | 824 | 6.30 | 866 | 6.79 | 906 | 7.29 | | | |
| 10000 | X | X | X | X | X | X | 705 | 5.37 | 751 | 5.88 | 795 | 6.45 | 837 | 6.96 | 877 | 7.47 | | | | | | |

| Modelo Model | CFM | 2.75" | | 3.00" | | 3.25" | | 3.5" | | 3.75" | |
|-----------------|-------|-------|------|-------|------|-------|------|------|------|-------|------|
| | | RPM | BHP | RPM | BHP | RPM | BHP | RPM | BHP | RPM | BHP |
| DI-18/18 Cont. | 3000 | * | * | * | * | * | * | * | * | * | * |
| | 3500 | * | * | * | * | * | * | * | * | * | * |
| | 4000 | * | * | * | * | * | * | * | * | * | * |
| | 4500 | 983 | 3.50 | 1028 | 3.85 | * | * | * | * | * | * |
| | 5000 | 977 | 3.82 | 1023 | 4.20 | 1067 | 4.58 | * | * | * | * |
| | 5500 | 972 | 4.17 | 1018 | 4.56 | 1062 | 4.96 | 1104 | 5.37 | 1145 | 5.79 |
| | 6000 | 968 | 4.54 | 1013 | 4.95 | 1057 | 5.37 | 1099 | 5.80 | 1140 | 6.24 |
| | 6500 | 965 | 4.95 | 1009 | 5.38 | 1052 | 5.81 | 1094 | 6.29 | 1135 | 6.71 |
| | 7000 | 964 | 5.39 | 1007 | 5.84 | 1049 | 6.29 | 1090 | 6.75 | 1130 | 7.22 |
| | 7500 | 964 | 5.88 | 1007 | 6.34 | 1048 | 6.81 | 1088 | 7.29 | | |
| | 8000 | 967 | 6.41 | 1008 | 6.88 | 1048 | 7.37 | | | | |
| | 8500 | 971 | 6.99 | 1011 | 7.48 | | | | | | |
| | 9000 | 976 | 7.62 | | | | | | | | |
| | 9500 | | | | | | | | | | |
| | 10000 | | | | | | | | | | |

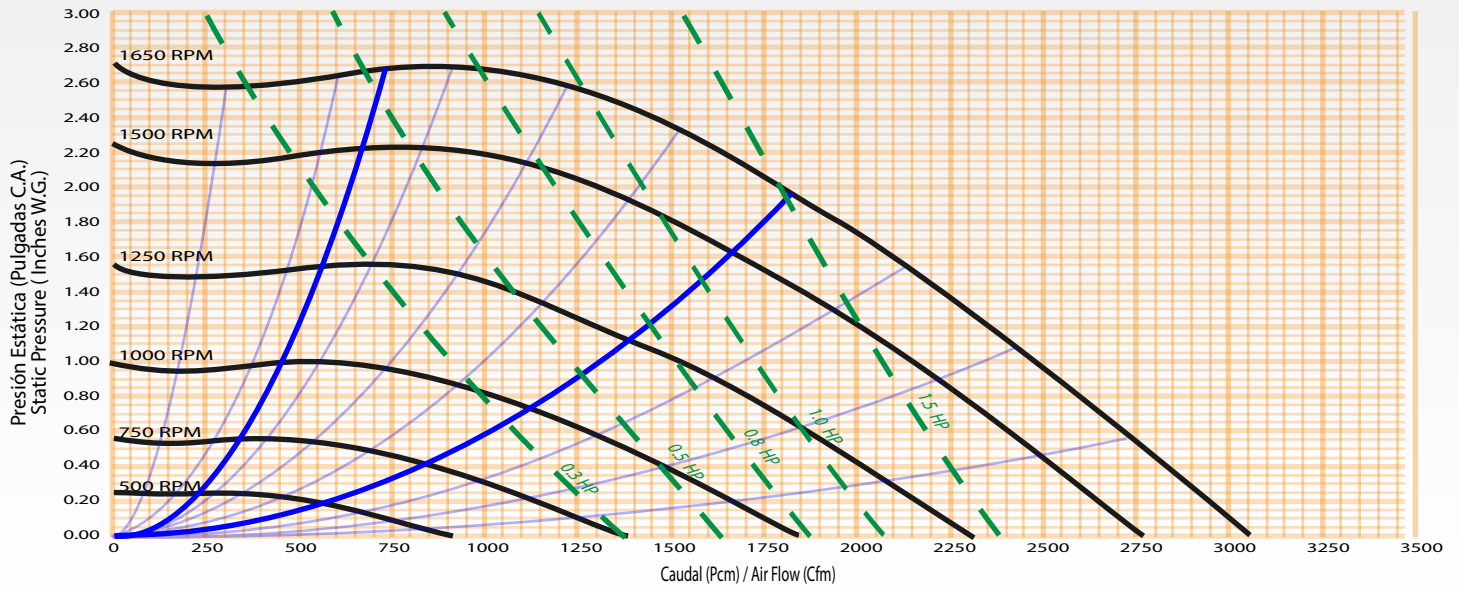
* Funcionamiento no estable y no recomendado
Performance is unstable and not recommended

x Funcionamiento es por debajo del 10% de eficiencia estática
Performance is below 10% static efficiency

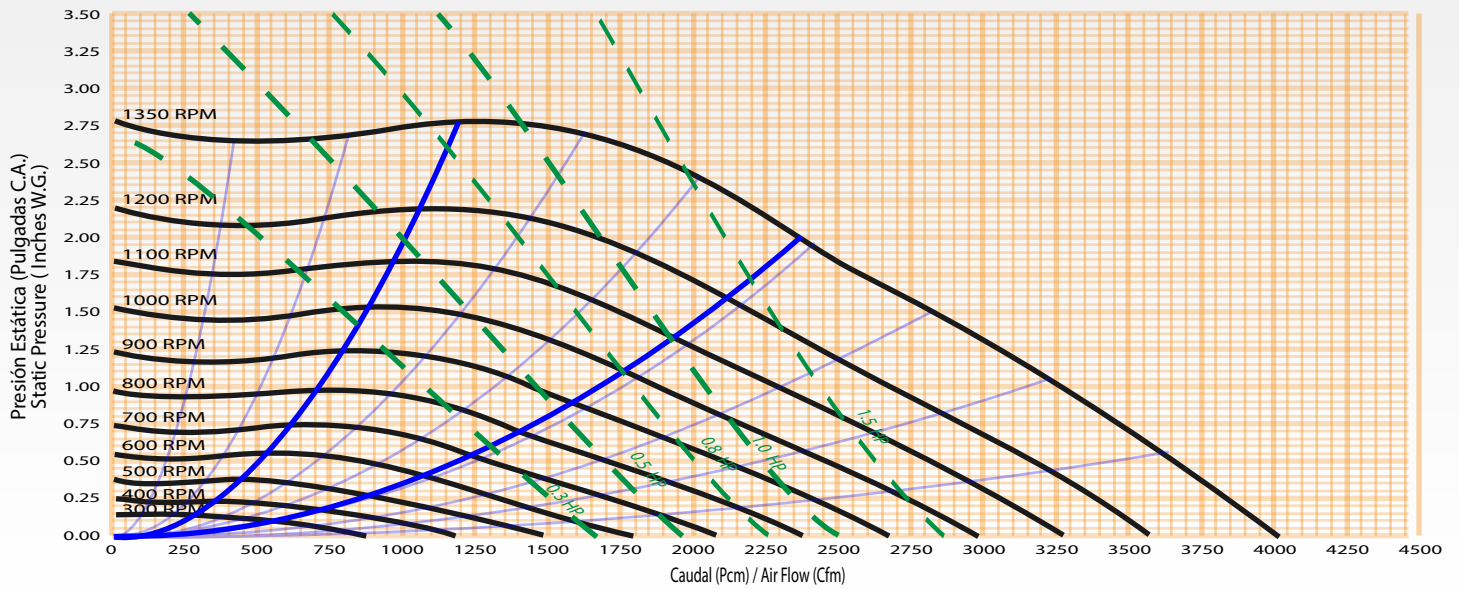
• Para especificaciones técnicas de modelos DI-20/20 al DI-36/36,
ver curvas de operaciones
For performance data of models DI-20/20 to DI-36/36, see
operation curves.

Curvas de operación / Operation curves

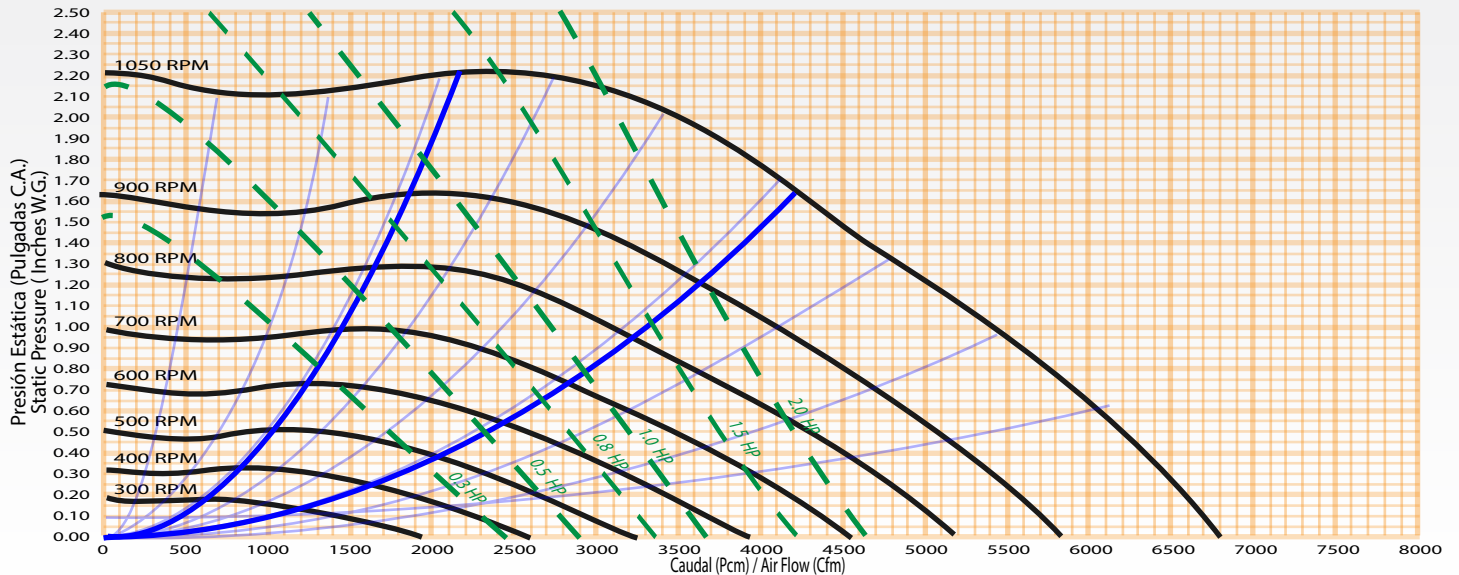
SI-10/6



SI-12/6



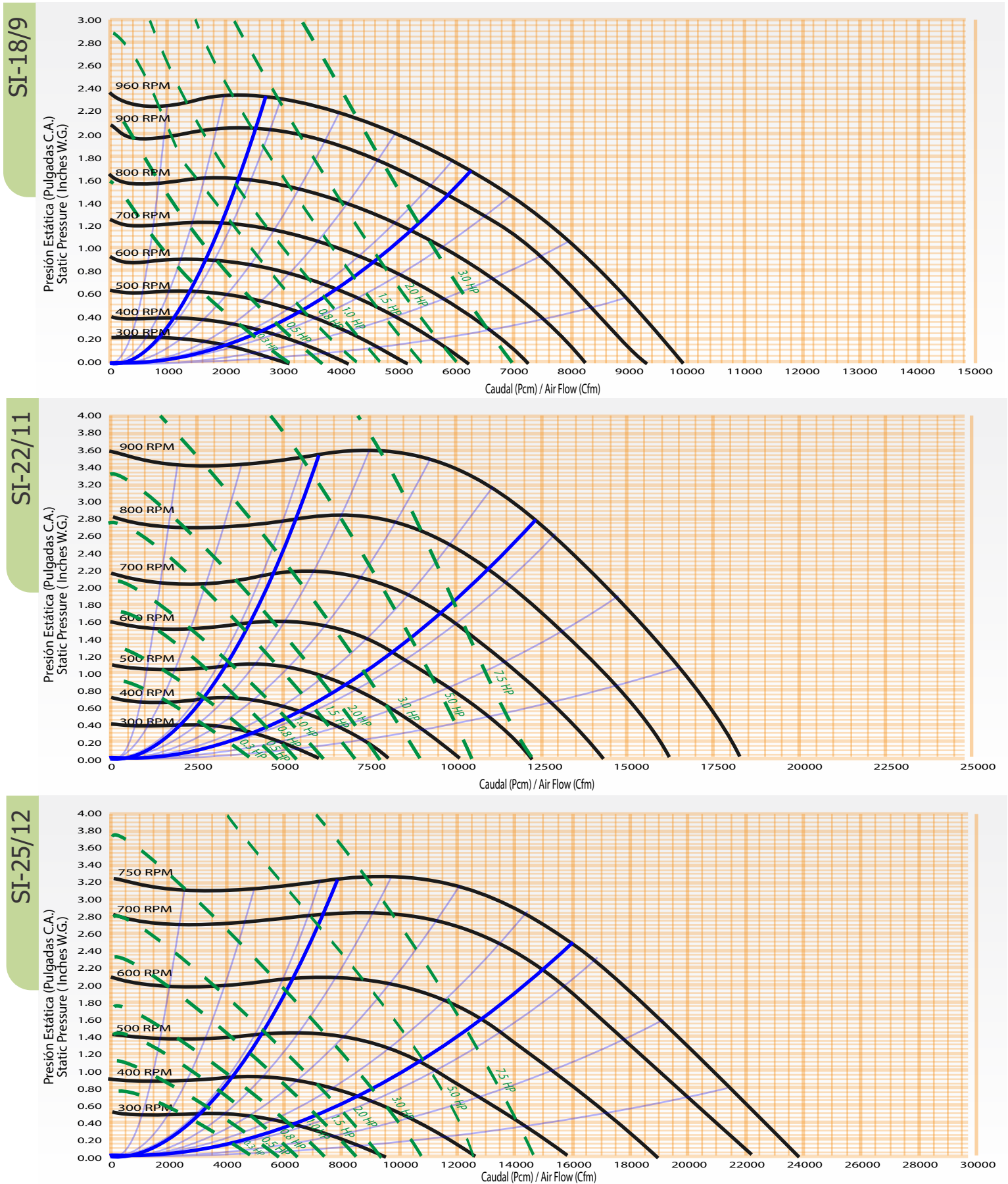
SI-15/9



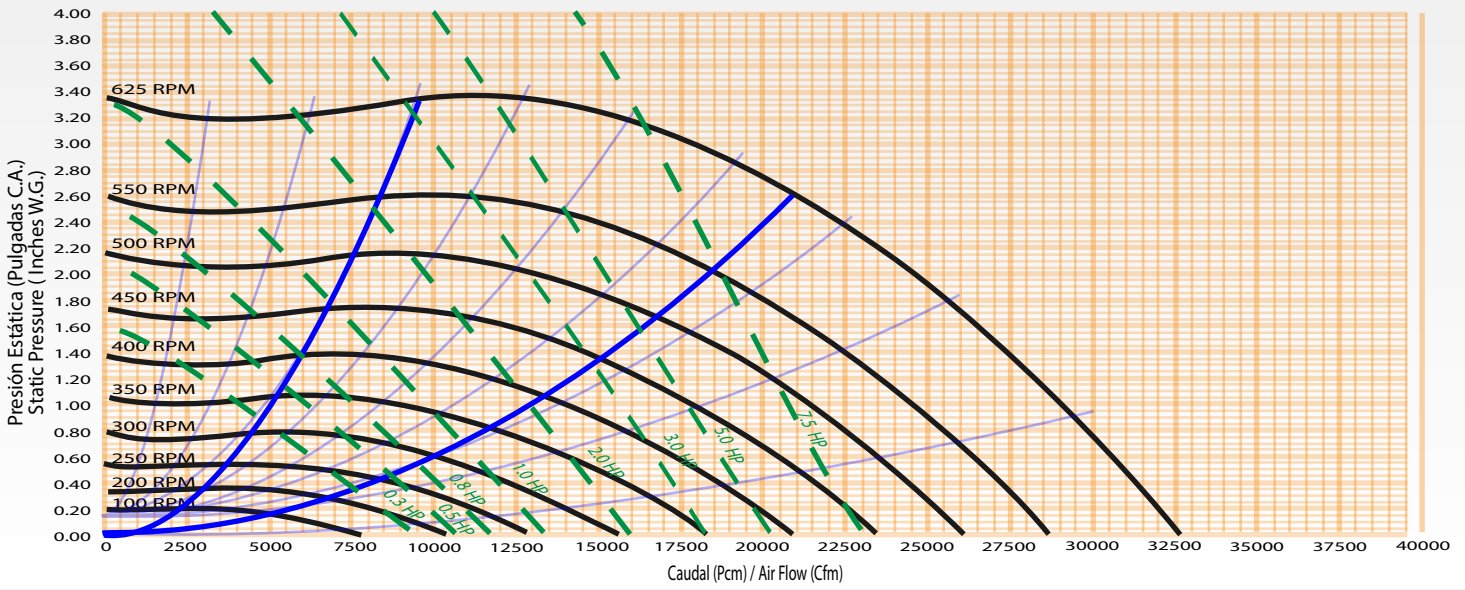
Todas las capacidades están basadas en la Densidad Estándar de Aire de 0.075 Lb/ft³ @ 70°F y 0 pies de Elevación: 1.2 kg/m³ @ 21°C y 0 mt
 (All Capacities are based on Standard Air Density of 0.075 Lb/ft³ @ 70°F and 0 Ft elevation: 1.2 kg/m³ @ 21°C and 0 mt)



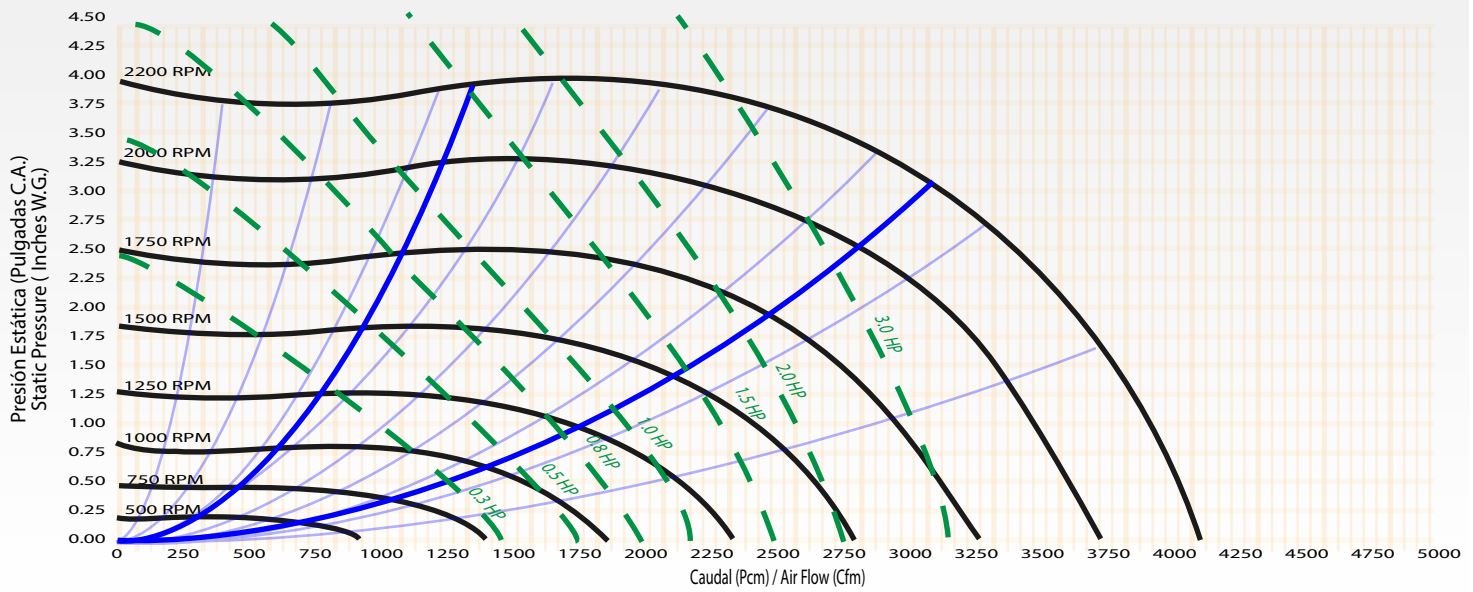
Curvas de operación / Operation curves



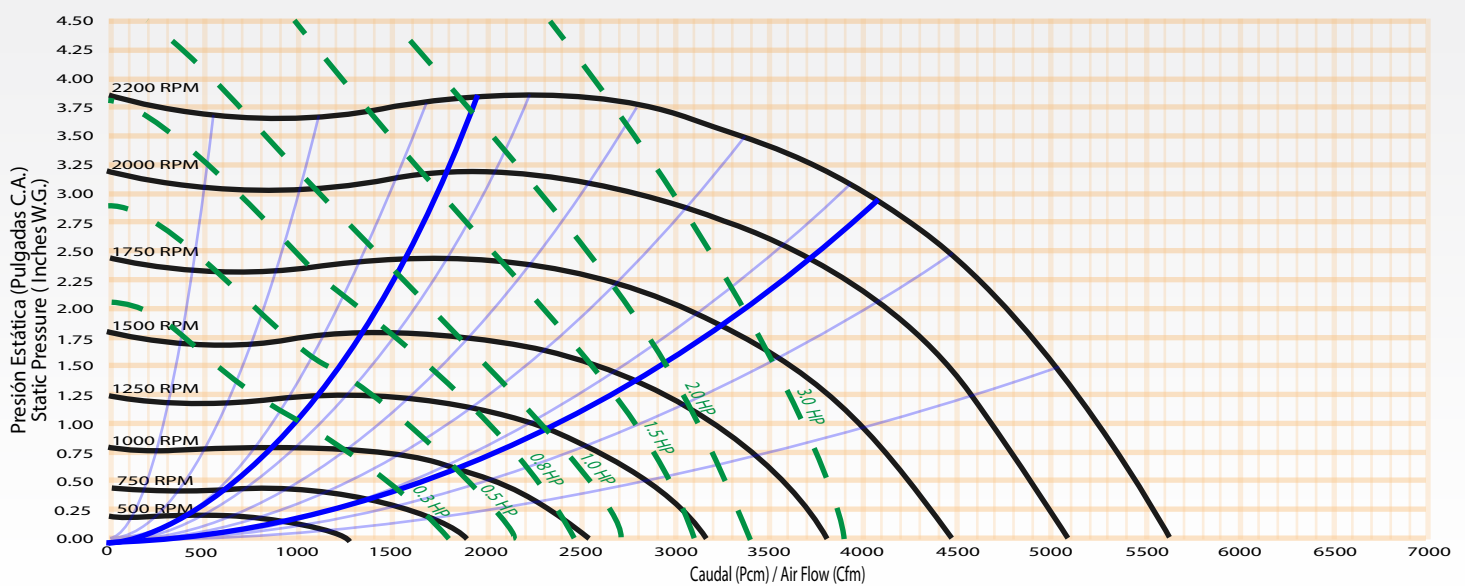
SI-30/15



DI-9/6

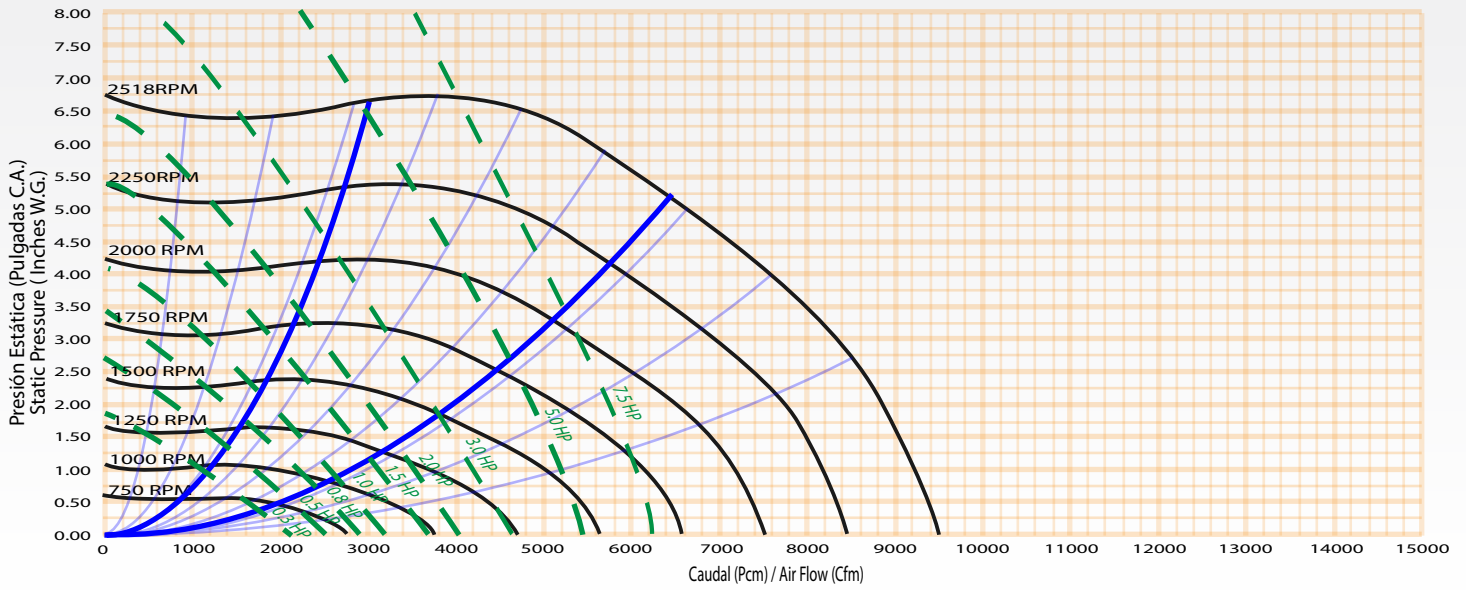


DI-9/9

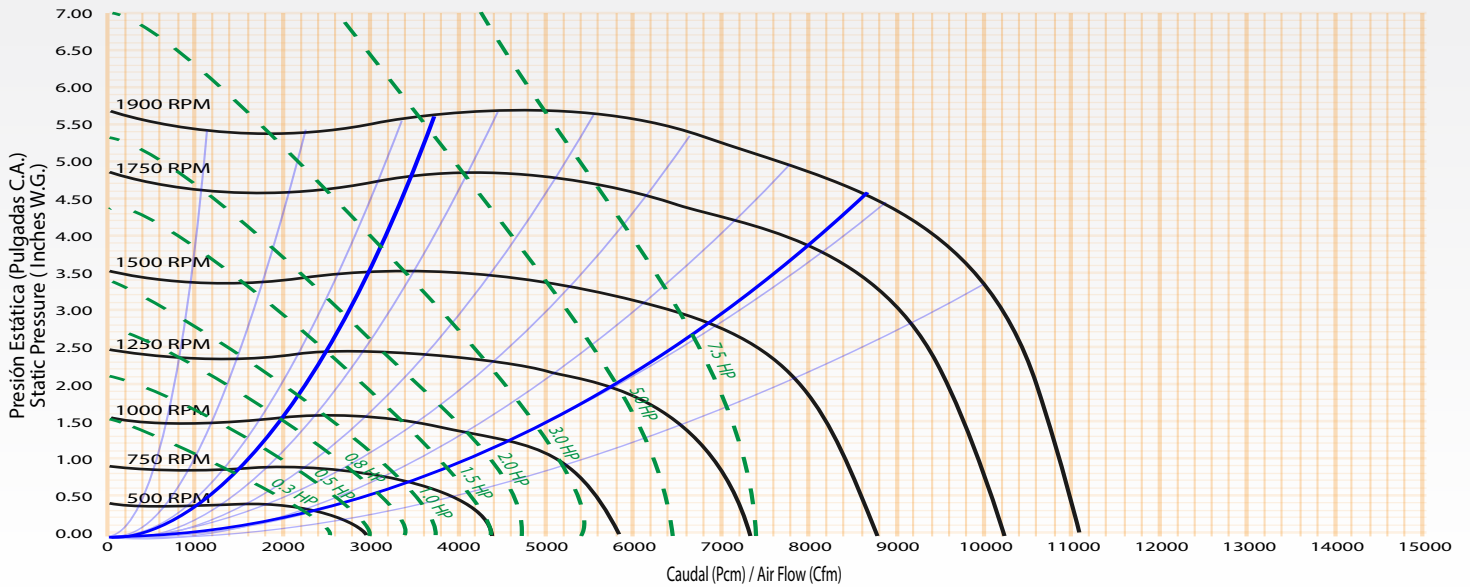


Curvas de operación / Operation curves

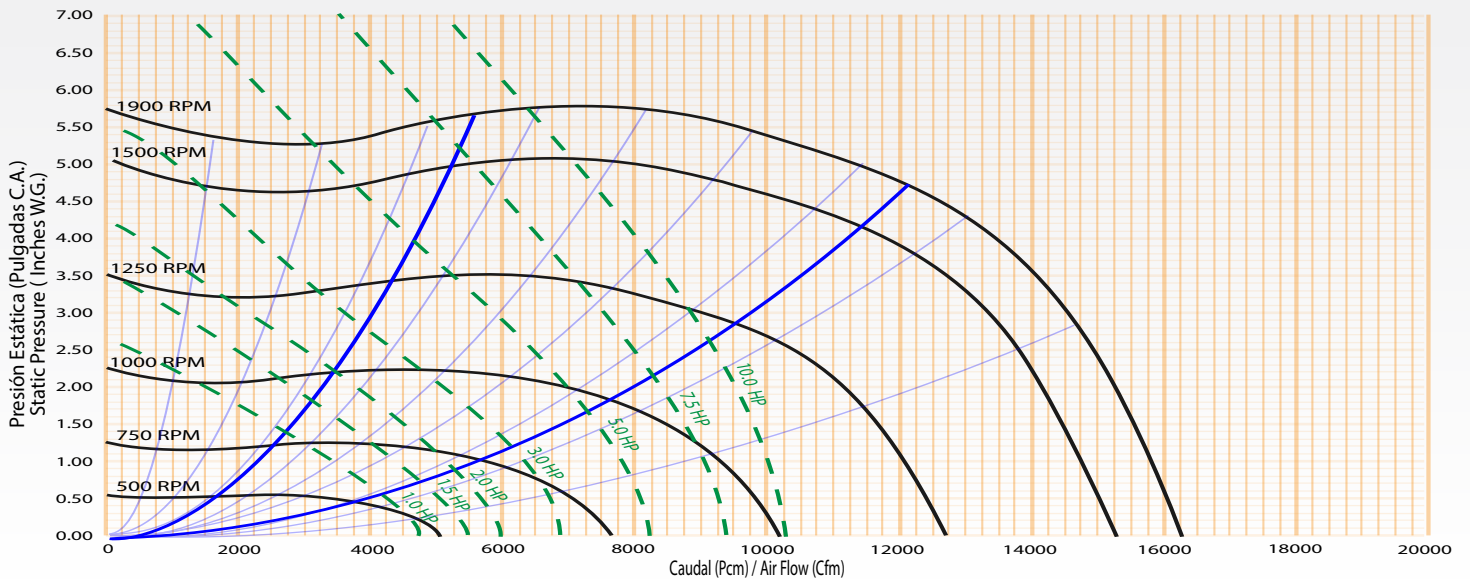
DI-10/10



DI-12/12



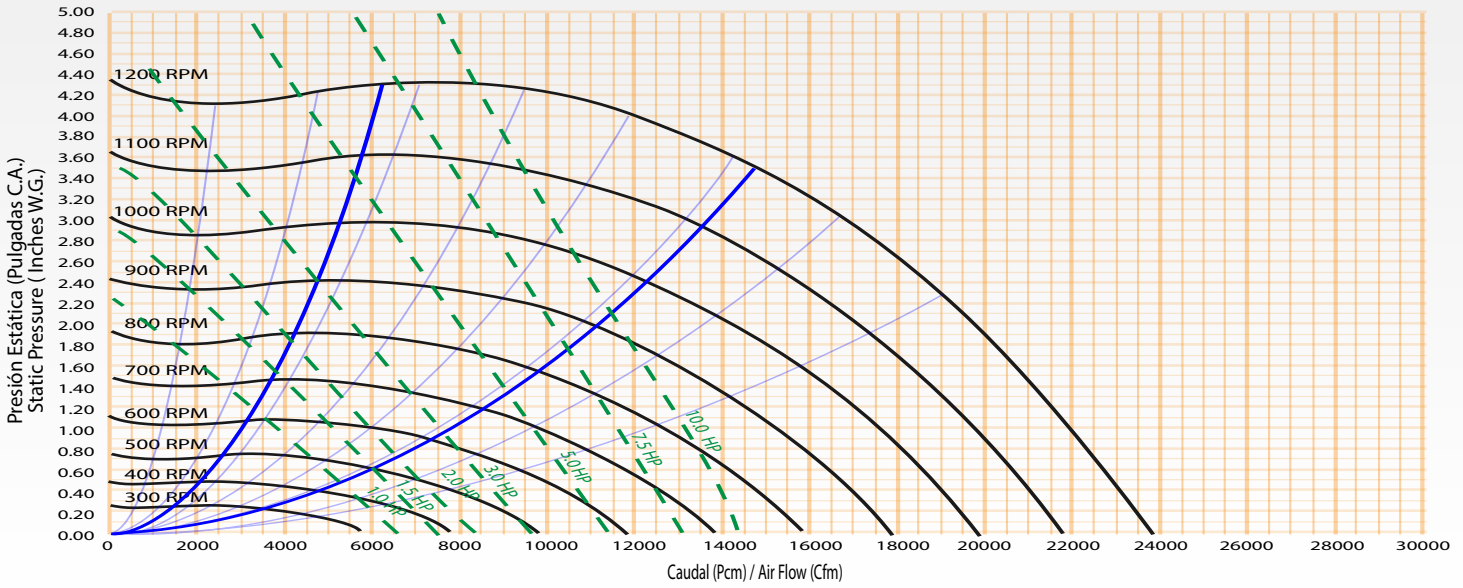
DI-15/15



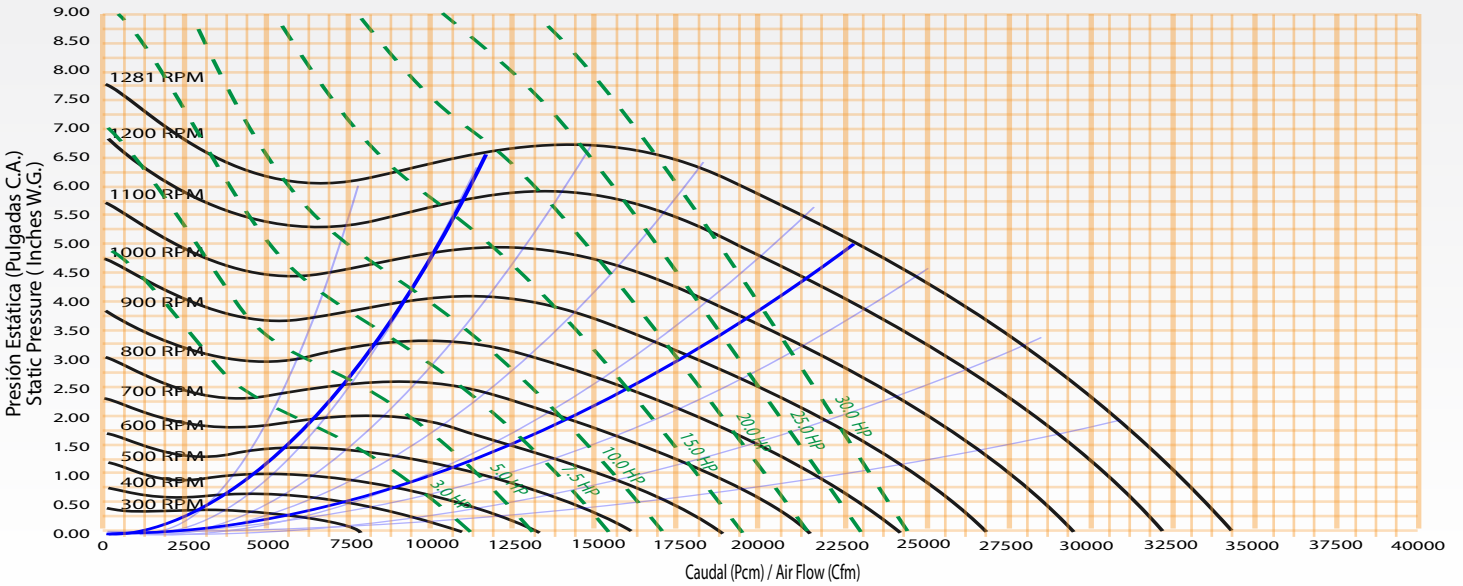
Todas las capacidades están basadas en la Densidad Estándar de Aire de 0.075 Lb/ft³ @ 70°F y 0 pies de Elevación: 1.2 kg/m³ @ 21°C y 0 mt
 (All Capacities are based on Standard Air Density of 0.075 Lb/ft³ @ 70°F and 0 Ft elevation: 1.2 kg/m³ @ 21°C and 0 mt)

Curvas de operación / Operation curves

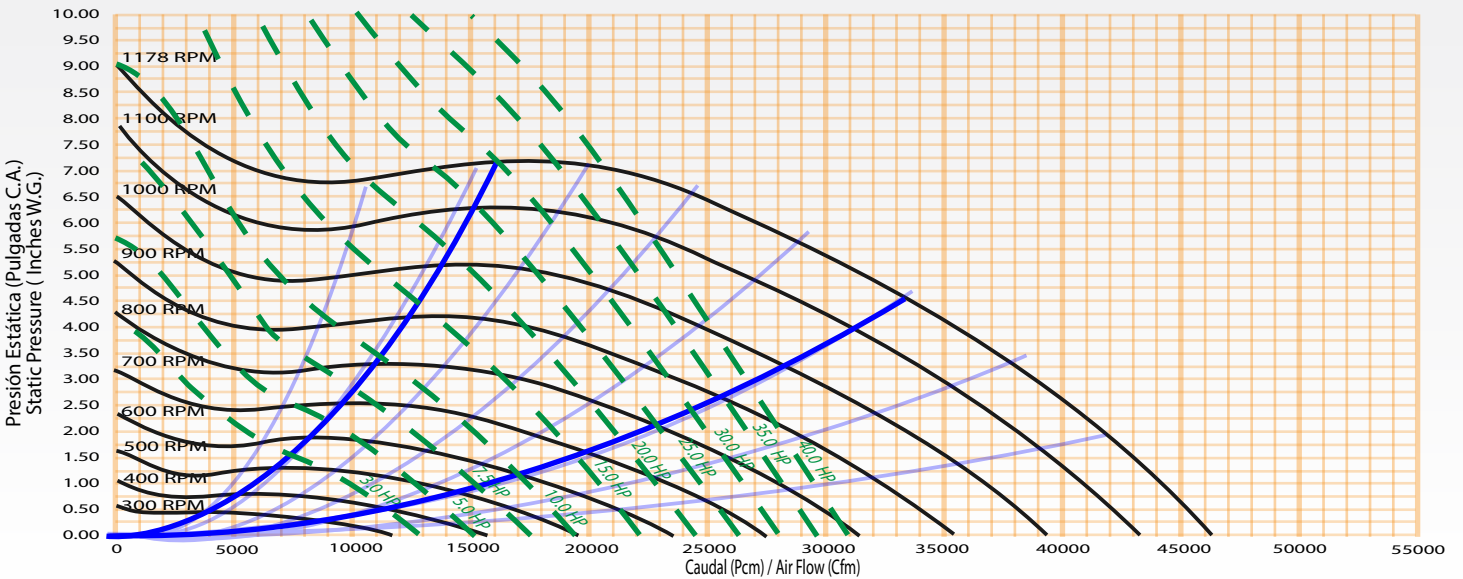
DI-18/18



DI-20/20



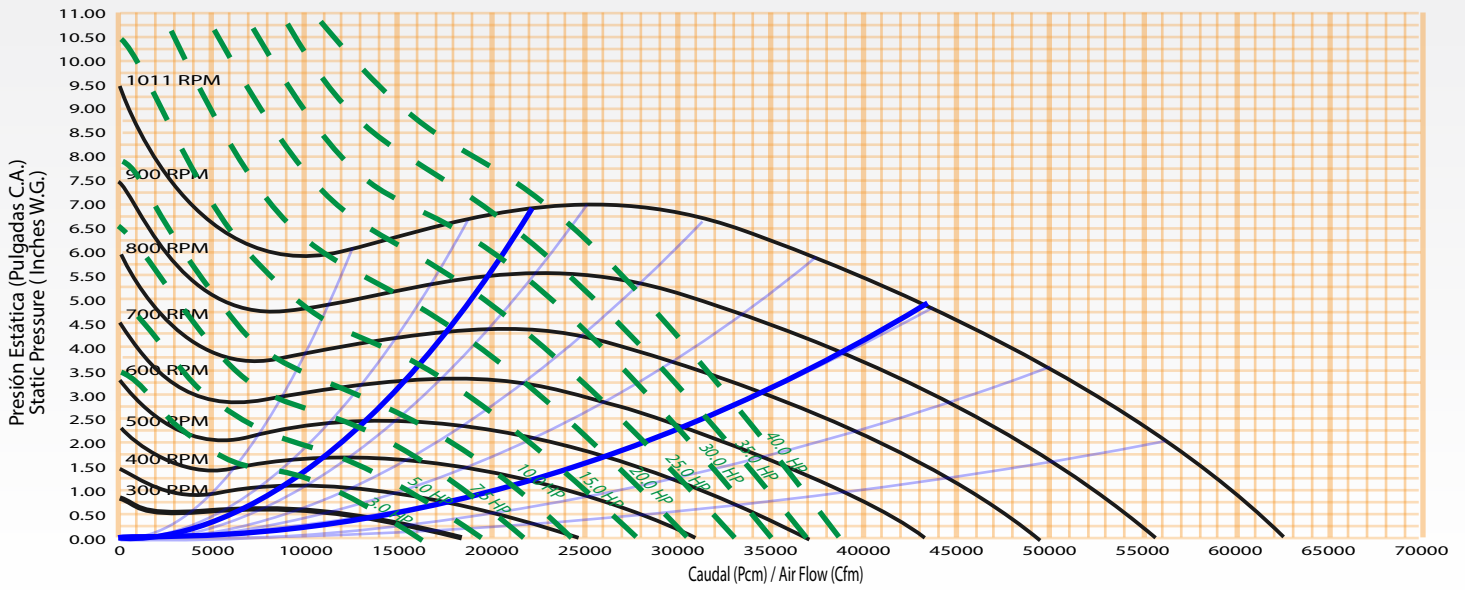
DI-22/22



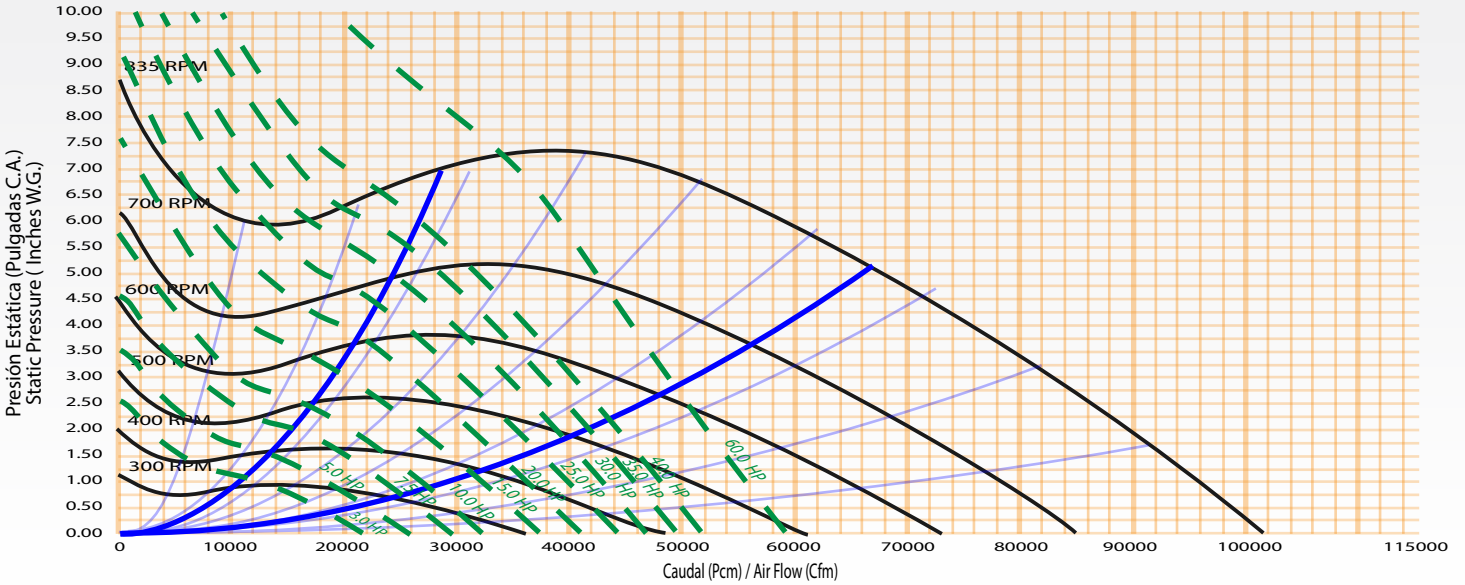
Todas las capacidades están basadas en la Densidad Estándar de Aire de 0.075 Lb/ft³ @ 70°F y 0 pies de Elevación: 1.2 kg/m³ @ 21°C y 0 mt
 (All Capacities are based on Standard Air Density of 0.075 Lb/ft³ @ 70°F and 0 Ft elevation: 1.2 kg/m³ @ 21°C and 0 mt)

Curvas de operación / Operation curves

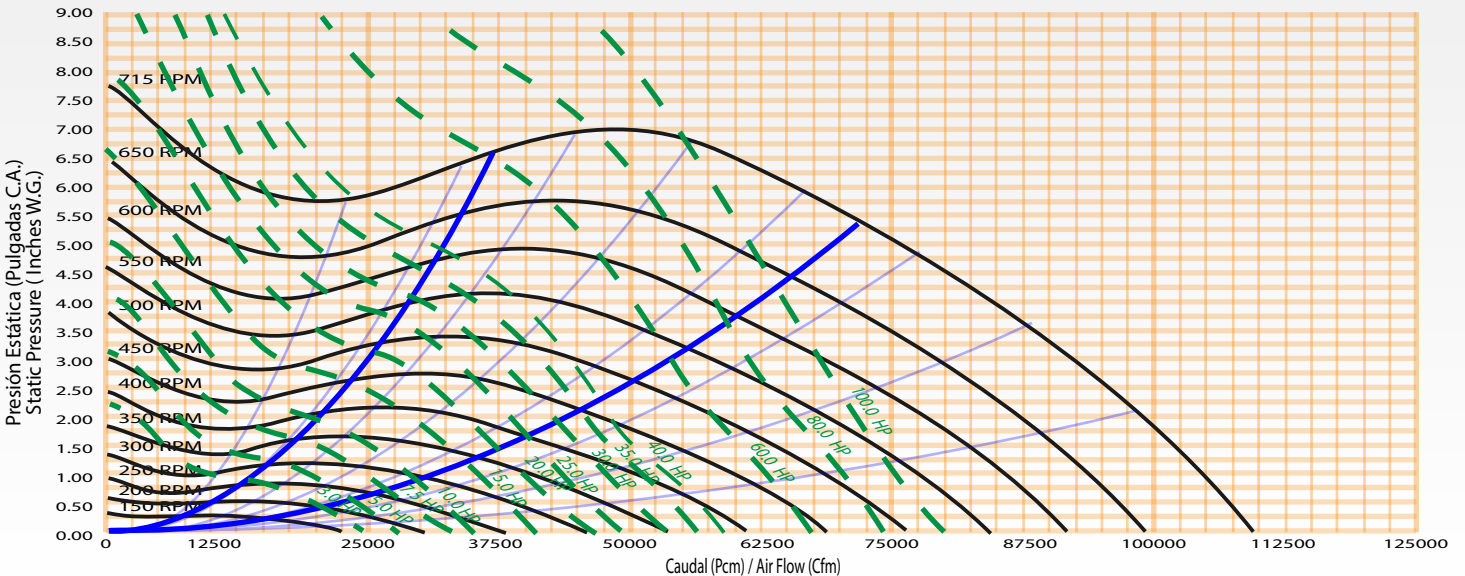
DI-25/25



DI-30/30



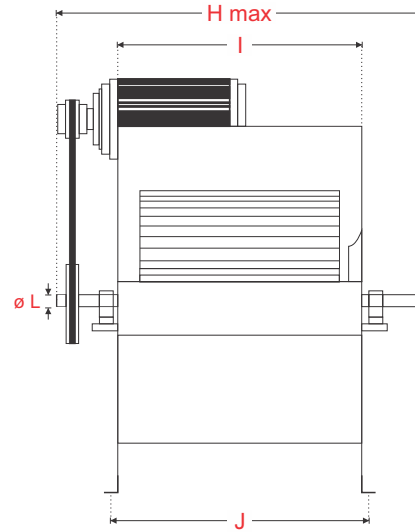
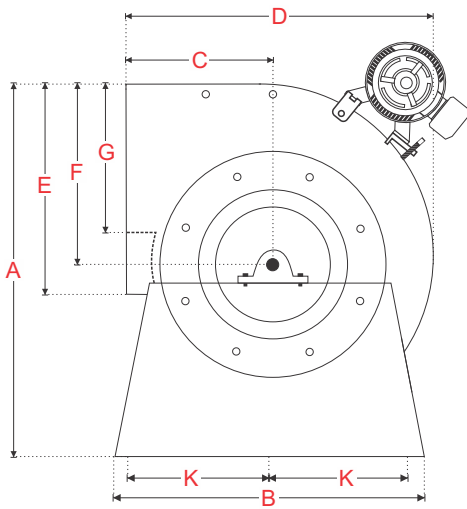
DI-36/36



Dimensiones generales / Dimensions

Arreglo 3I. Modelos: SI-10/6 al SI-18/9

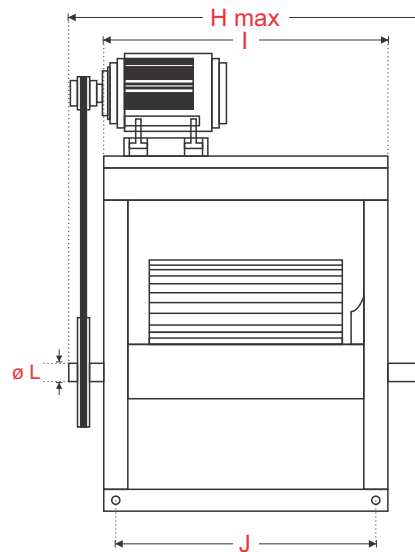
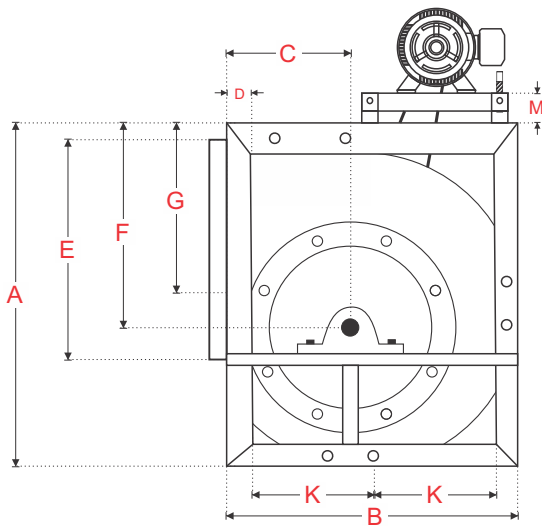
Arrangement 3I. Models: SI-10/6 to SI-18/9



| Modelo Model | Pulgadas (Inches) | | | | | | | | | | | |
|-----------------|-------------------|----------|---------|----------|---------|---------|---------|----------|----------|---------|---------|-----|
| | A | B | C | D | E | F | G | H | I | J | K | Ø L |
| SI-10/6 | 21 1/8 | 15 1/16 | 7 15/16 | 16 9/16 | 11 3/8 | 9 11/16 | 7 | 16 15/16 | 7 15/16 | 9 7/16 | 5 17/32 | 3/4 |
| SI-12/6 | 21 7/32 | 15 11/32 | 8 1/32 | 16 27/32 | 13 5/8 | 10 1/32 | 8 3/8 | 17 11/16 | 8 11/16 | 10 3/16 | 5 43/64 | 3/4 |
| SI-15/9 | 28 | 21 3/16 | 10 1/2 | 22 11/16 | 24 1/4 | 13 9/16 | 9 11/16 | 21 15/16 | 12 15/16 | 14 7/16 | 8 19/32 | 1 |
| SI-18/9 | 32 15/16 | 25 1/2 | 12 3/8 | 27 | 29 3/16 | 16 5/16 | 11 3/4 | 21 15/16 | 12 15/16 | 14 7/16 | 10 3/4 | 1 |

Arreglo 3I. Modelos: SI-22/11 al SI-30/15

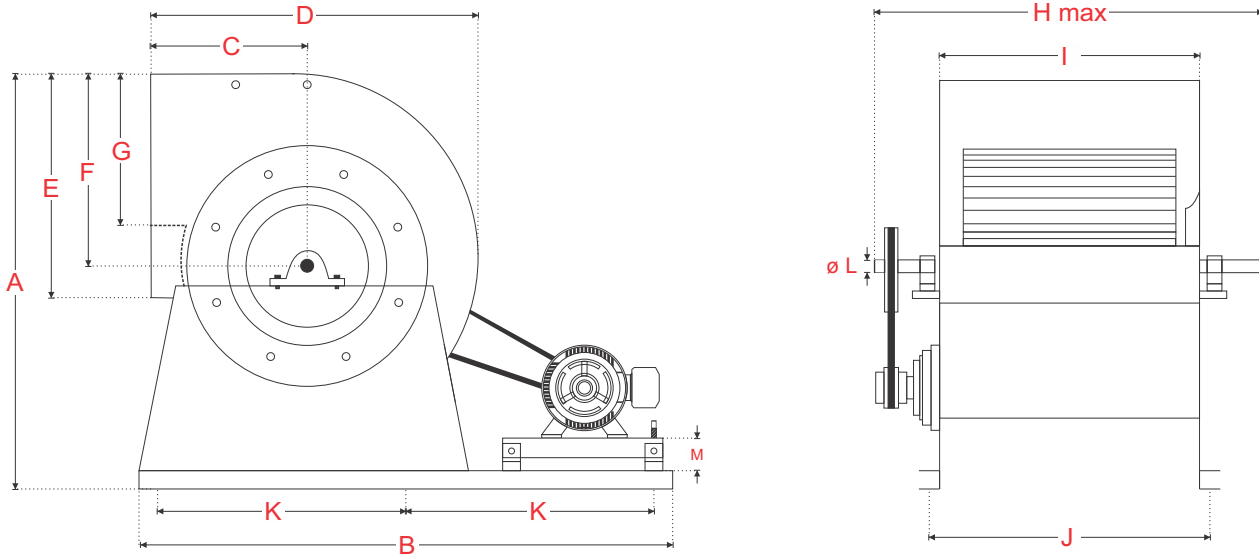
Arrangement 3I. Models: SI-22/11 to SI-30/15



| Modelo Model | Pulgadas (Inches) | | | | | | | | | | | | |
|-----------------|-------------------|----------|----------|-------|--------|----------|--------|--------|--------|--------|----------|-------|---|
| | A | B | C | D | E | F | G | H | I | J | K | Ø L | M |
| SI-22/11 | 39 3/4 | 32 21/32 | 15 11/16 | 2 3/4 | 27 1/4 | 22 19/32 | 14 3/4 | 31 1/8 | 21 1/8 | 19 1/8 | 14 21/64 | 1 1/8 | 2 |
| SI-25/12 | 45 | 36 25/32 | 17 1/4 | 2 3/4 | 31 1/4 | 25 21/32 | 17 1/2 | 33 5/8 | 23 5/8 | 21 5/8 | 16 25/64 | 1 1/8 | 2 |
| SI-30/15 | 53 5/8 | 44 5/8 | 19 5/8 | 2 3/4 | 37 | 30 9/16 | 21 3/4 | 37 3/4 | 27 3/4 | 25 3/4 | 20 5/16 | 1 3/8 | 2 |

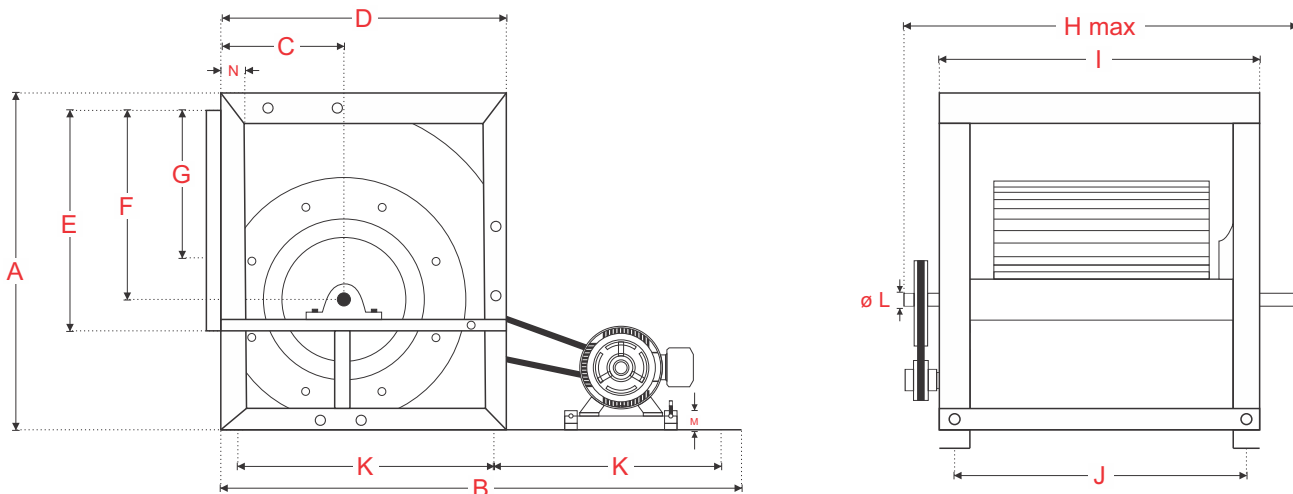
Dimensiones generales / Dimensions

Arreglo 3B. Modelos: SI-10/6 al SI-18/9
 Arrangement 3B. Models: SI-10/6 to SI-18/9



| Modelo Model | Pulgadas (Inches) | | | | | | | | | | | | |
|-----------------|-------------------|----------|---------|----------|---------|---------|---------|----------|----------|---------|----------|-----|-------|
| | A | B | C | D | E | F | G | H | I | J | K | ØL | M |
| SI-10/6 | 21 1/8 | 27 1/16 | 7 15/16 | 16 9/16 | 11 3/8 | 9 11/16 | 7 | 16 15/16 | 7 15/16 | 9 7/16 | 11 17/32 | 3/4 | 1 1/2 |
| SI-12/6 | 21 7/32 | 27 11/32 | 8 1/32 | 16 27/32 | 13 5/8 | 10 1/32 | 8 3/8 | 17 11/16 | 8 11/16 | 10 3/16 | 11 43/64 | 3/4 | 1 1/2 |
| SI-15/9 | 28 | 33 3/16 | 10 1/2 | 22 11/16 | 24 1/4 | 13 9/16 | 9 11/16 | 21 15/16 | 12 15/16 | 14 7/16 | 14 19/32 | 1 | 1 1/2 |
| SI-18/9 | 32 15/16 | 37 1/2 | 12 3/8 | 27 | 29 3/16 | 16 5/16 | 11 3/4 | 21 15/16 | 12 15/16 | 14 7/16 | 16 3/4 | 1 | 1 1/2 |

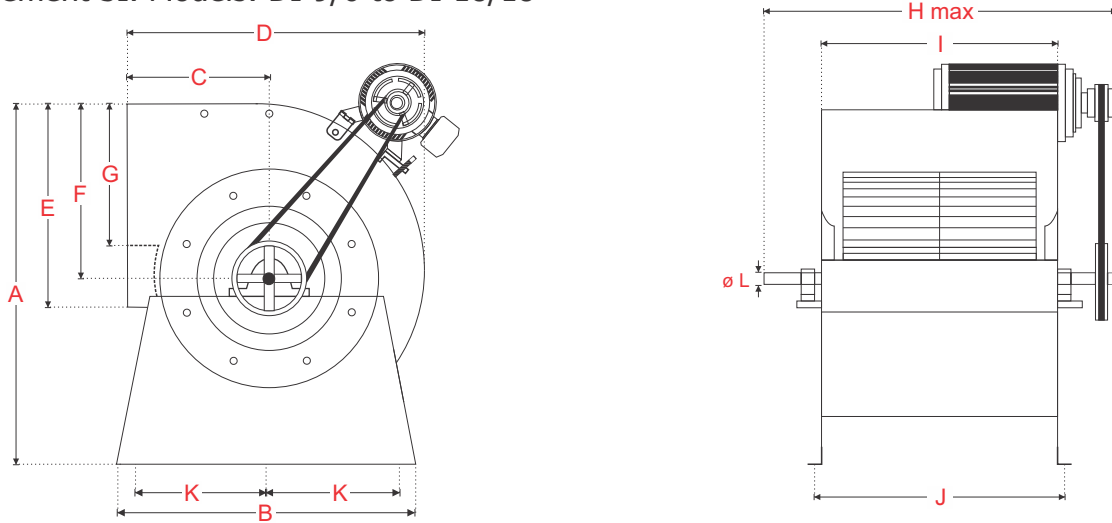
Arreglo 3B. Modelos: SI-22/11 al SI-30/15
 Arrangement 3B. Models: SI-22/11 to SI-30/15



| Modelo Model | Pulgadas (Inches) | | | | | | | | | | | | | | |
|-----------------|-------------------|----------|----------|--------|--------|----------|--------|--------|--------|--------|---------|-------|---|-------|--|
| | A | B | C | D | E | F | G | H | I | J | K | ØL | M | N | |
| SI-22/11 | 39 3/4 | 58 21/32 | 15 11/16 | 32 2/3 | 27 1/4 | 22 19/32 | 14 3/4 | 31 1/8 | 21 1/8 | 19 1/8 | 27 1/8 | 1 1/8 | 2 | 2 3/4 | |
| SI-25/12 | 45 | 62 1/2 | 17 1/4 | 36 7/9 | 31 1/4 | 25 21/32 | 17 1/2 | 33 5/8 | 23 5/8 | 21 5/8 | 29 1/4 | 1 1/8 | 2 | 2 3/4 | |
| SI-30/15 | 53 5/8 | 70 7/8 | 19 5/8 | 44 5/8 | 37 | 30 9/16 | 21 3/4 | 37 3/4 | 27 3/4 | 25 3/4 | 33 7/16 | 1 3/8 | 2 | 2 3/4 | |

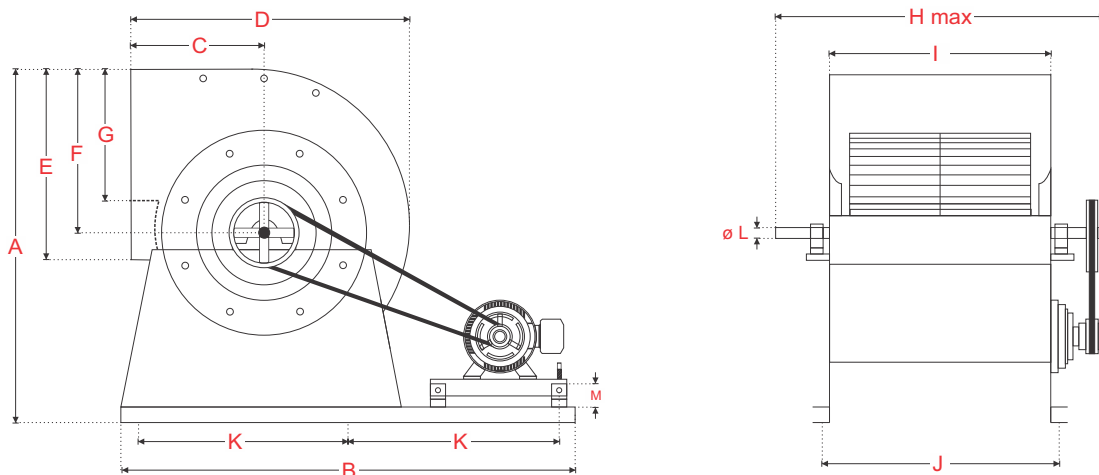
Dimensiones generales / Dimensions

Arreglo 3I. Modelos: DI-9/6 al DI-18/18
 Arrangement 3I. Models: DI-9/6 to DI-18/18



| Modelo Model | Pulgadas (Inches) | | | | | | | | | | | |
|-----------------|-------------------|---------|---------|----------|---------|---------|---------|--------|--------|--------|---------|-------|
| | A | B | C | D | E | F | G | H max | I | J | K | ø L |
| DI-9/6 | 19 3/16 | 13 7/16 | 7 15/64 | 14 15/16 | 10 1/4 | 8 5/8 | 6 5/16 | 18 | 9 | 10 1/2 | 4 23/32 | 3/4 |
| DI-9/9 | 19 3/16 | 13 7/16 | 7 15/64 | 14 15/16 | 10 1/4 | 8 5/8 | 6 5/16 | 21 5/8 | 12 5/8 | 14 1/8 | 4 23/32 | 3/4 |
| DI-10/10 | 21 1/8 | 15 1/16 | 7 15/16 | 16 9/16 | 11 3/8 | 9 11/16 | 7 | 23 | 14 | 15 1/2 | 5 17/32 | 3/4 |
| DI-12/12 | 24 1/8 | 17 7/8 | 9 1/8 | 19 3/8 | 13 7/16 | 11 1/2 | 8 3/8 | 25 1/2 | 16 1/2 | 18 | 6 15/16 | 1 |
| DI-15/15 | 28 | 21 3/16 | 10 1/2 | 22 11/16 | 15 7/8 | 13 9/16 | 9 11/16 | 28 | 19 | 20 1/2 | 8 19/32 | 1 |
| DI-18/18 | 32 15/16 | 25 1/2 | 12 3/8 | 27 | 18 7/8 | 16 5/16 | 11 3/4 | 31 3/4 | 22 3/4 | 24 1/4 | 10 3/4 | 1 1/8 |

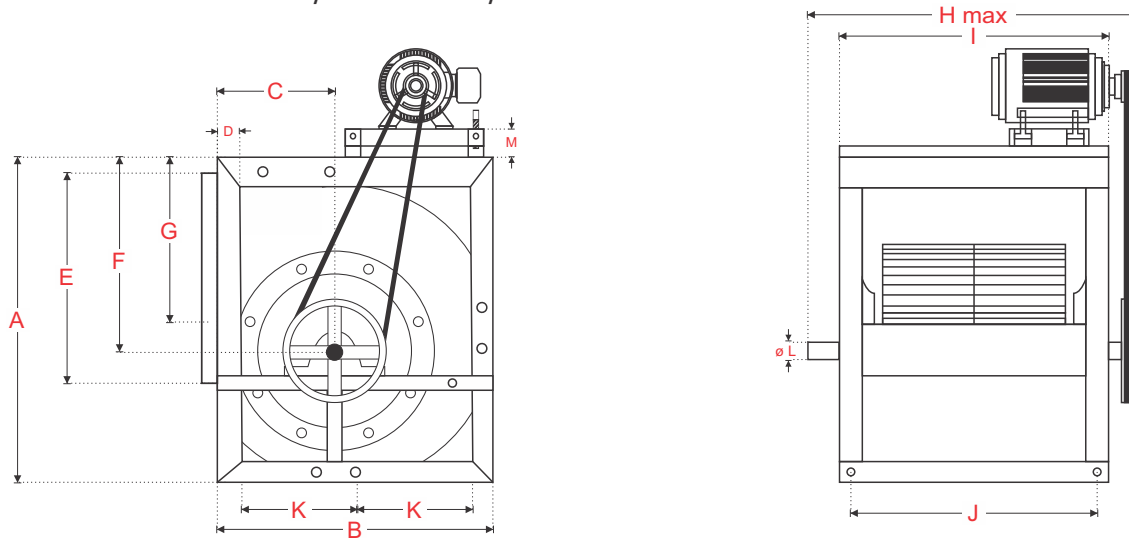
Arreglo 3B. Modelos: DI-9/6 al DI -8/18
 Arrangement 3B. Models: DI-9/6 to DI-18/18



| Modelo Model | Pulgadas (Inches) | | | | | | | | | | | | |
|-----------------|-------------------|---------|---------|----------|---------|---------|---------|--------|--------|--------|----------|-------|-------|
| | A | B | C | D | E | F | G | H | I | J | K | ø L | M |
| DI-9/6 | 19 3/16 | 25 7/16 | 7 15/64 | 14 15/16 | 10 1/4 | 8 5/8 | 6 5/16 | 18 | 9 | 10 1/2 | 10 23/32 | 3/4 | 1 1/2 |
| DI-9/9 | 19 3/16 | 25 7/16 | 7 15/64 | 14 15/16 | 10 1/4 | 8 5/8 | 6 5/16 | 21 5/8 | 12 5/8 | 14 1/8 | 10 23/32 | 3/4 | 1 1/2 |
| DI-10/10 | 21 1/8 | 27 7/16 | 7 15/16 | 16 9/16 | 11 3/8 | 9 11/16 | 7 | 23 | 14 | 15 1/2 | 11 17/32 | 3/4 | 1 1/2 |
| DI-12/12 | 24 1/8 | 29 7/8 | 9 1/8 | 19 3/8 | 13 7/16 | 11 1/2 | 8 3/8 | 25 1/2 | 16 1/2 | 18 | 12 15/16 | 1 | 1 1/2 |
| DI-15/15 | 28 | 33 3/16 | 10 1/2 | 22 11/16 | 15 7/8 | 13 9/16 | 9 11/16 | 28 | 19 | 20 1/2 | 14 19/32 | 1 | 1 1/2 |
| DI-18/18 | 32 15/16 | 37 1/2 | 12 3/8 | 27 | 18 7/8 | 16 5/16 | 11 3/4 | 31 3/4 | 22 3/4 | 24 1/4 | 16 3/4 | 1 1/8 | 1 1/2 |

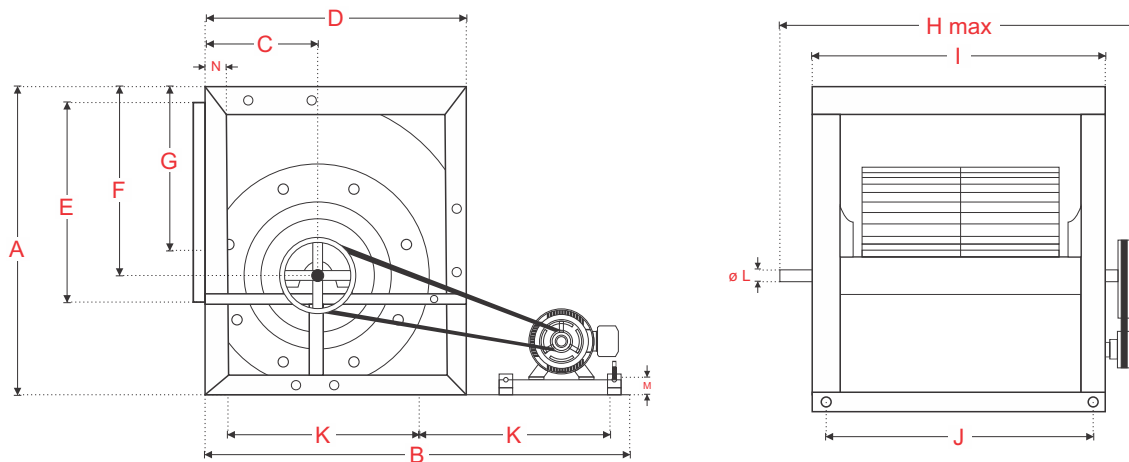
Dimensiones generales / Dimensions

Arreglo 3I. Modelos: DI-20/20 al DI-36/36
 Arrangement 3I. Models: DI-20/20 to DI-36/36



| Modelo Model | Pulgadas (Inches) | | | | | | | | | | | | |
|-----------------|-------------------|----------|----------|-------|----------|----------|--------|--------|--------|--------|---------|-------|---|
| | A | B | C | D | E | F | G | H | I | J | K | Ø L | M |
| DI-20/20 | 36 1/8 | 29 19/32 | 14 7/16 | 2 3/4 | 24 3/4 | 20 17/32 | 15 | 38 3/4 | 28 3/4 | 26 3/4 | 12 4/5 | 1 1/8 | 2 |
| DI-22/22 | 39 3/4 | 32 2/3 | 15 11/16 | 2 3/4 | 27 1/4 | 22 19/32 | 16 3/4 | 41 1/4 | 31 1/4 | 29 1/4 | 14 1/3 | 1 3/8 | 2 |
| DI-25/25 | 45 | 36 7/9 | 17 1/4 | 2 3/4 | 31 1/4 | 25 21/32 | 19 1/2 | 45 1/4 | 35 1/4 | 33 1/4 | 16 2/5 | 1 3/8 | 2 |
| DI-30/30 | 53 3/4 | 44 5/8 | 19 5/8 | 2 3/4 | 37 | 30 9/16 | 23 3/4 | 50 3/4 | 40 3/4 | 38 3/4 | 20 5/16 | 1 5/8 | 2 |
| DI-36/36 | 57 7/8 | 50 5/8 | 24 19/32 | 2 3/4 | 42 15/16 | 32 1/4 | 25 5/8 | 56 3/4 | 46 3/4 | 44 3/4 | 23 5/16 | 1 7/8 | 2 |

Arreglo 3B. Modelos: DI-20/20 al DI-36/36
 Arrangement 3B. Models: DI-20/20 to DI-36/36

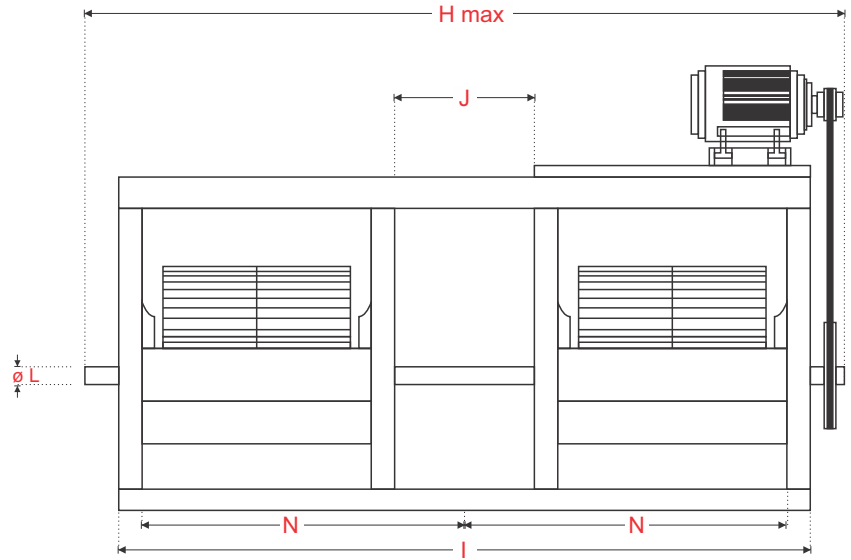
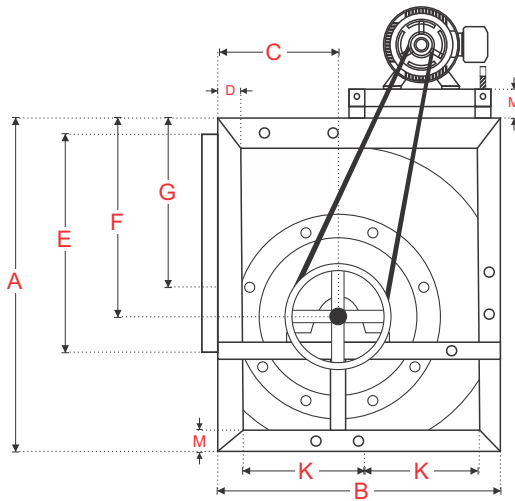


| Modelo Model | Pulgadas (Inches) | | | | | | | | | | | | | | |
|-----------------|-------------------|--------|----------|----------|----------|----------|--------|--------|--------|--------|---------|-------|---|-------|--|
| | A | B | C | D | E | F | G | H | I | J | K | Ø L | M | N | |
| DI-20/20 | 36 1/8 | 55 | 14 7/16 | 29 19/32 | 24 3/4 | 20 17/32 | 15 | 38 3/4 | 28 3/4 | 26 3/4 | 25 1/2 | 1 1/8 | 2 | 2 3/4 | |
| DI-22/22 | 39 3/4 | 58 1/4 | 15 11/16 | 32 21/32 | 27 1/4 | 22 19/32 | 16 3/4 | 41 1/4 | 31 1/4 | 29 1/4 | 27 1/8 | 1 3/8 | 2 | 2 3/4 | |
| DI-25/25 | 45 | 62 1/2 | 17 1/4 | 36 25/32 | 31 1/4 | 25 21/32 | 19 1/2 | 45 1/4 | 35 1/4 | 33 1/4 | 29 1/4 | 1 3/8 | 2 | 2 3/4 | |
| DI-30/30 | 53 3/4 | 70 7/8 | 19 5/8 | 44 5/8 | 37 | 30 9/16 | 23 3/4 | 50 3/4 | 40 3/4 | 38 3/4 | 33 7/16 | 1 5/8 | 2 | 2 3/4 | |
| DI-36/36 | 57 7/8 | 76 3/8 | 24 19/32 | 50 5/8 | 42 15/16 | 32 1/4 | 25 5/8 | 56 3/4 | 46 3/4 | 44 3/4 | 36 3/16 | 1 7/8 | 2 | 2 3/4 | |

Dimensiones generales / Dimensions

Modelos: DIT: 10/10, 12/12 y 15/15

Models: DIT: 10/10, 12/12 and 15/15



| Modelo Model | Pulgadas (Inches) | | | | | | | | | | | | | | |
|-----------------|-------------------|----------|---------|--------|---------|---------|---------|--------|--------|-------|----------|-----|-------|----------|-------|
| | A | B | C | D | E | F | G | H | I | J | K | Ø L | M | N | O |
| DIT-10/10 | 17 3/8 | 16 9/16 | 7 15/16 | 1 9/16 | 11 3/8 | 9 11/16 | 7 | 44 7/8 | 35 7/8 | 7 7/8 | 6 | 3/4 | 1 1/2 | 16 7/16 | 1 1/2 |
| DIT-12/12 | 20 3/8 | 19 3/8 | 9 1/8 | 1 9/16 | 13 7/16 | 11 1/2 | 8 3/8 | 49 7/8 | 40 7/8 | 7 7/8 | 10 13/32 | 1 | 1 1/2 | 18 15/16 | 1 1/2 |
| DIT-15/15 | 24 1/4 | 22 11/16 | 10 1/2 | 1 9/16 | 15 7/8 | 13 9/16 | 9 11/16 | 54 7/8 | 45 7/8 | 7 7/8 | 12 1/16 | 1 | 1 1/2 | 21 7/16 | 1 1/2 |



**The
Right
Choice**

Air Technology se reserva el derecho de modificación sin previo aviso.

Air Technology reserves the right to change specifications without prior notice.

